

Turns your GPS plus Laptop or PDA into a complete navigation system using the fabulous Landranger® maps of the UK. The ideal tool for the outdoor enthusiast.



Plug a GPS into your laptop or PDA for real-time GPS navigation. Or, use FUGAWI UK to plan your trip and then upload/download waypoints, routes and tracks to your GPS.



Software for Windows, Pocket PC and Palm with Digital Maps of the UK—all in one box

A great tool for:

- Hiking, cycling, fishing, holidays, or other outdoor activity
- Planning your outings
- Navigating on moving digital maps using your PC or PDA
- Finding place names and historic sites
- Measuring travel distances
- Learning the geography of Great Britain
- Archiving your GPS waypoints, routes and tracks

FUGAWI UK™ is new GPS software for PC and PDA, which includes the famous and detailed Ordnance Survey[®] Landranger[®] maps and elevation data.

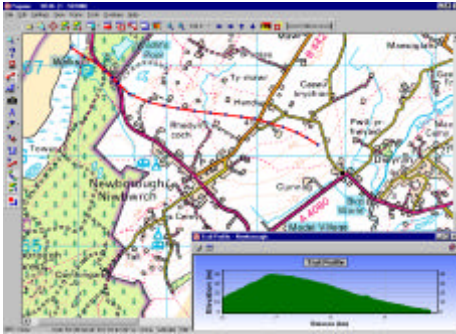
FUGAWI UK is supplied with UK Ordnance Survey maps at 1:50,000 for the region purchased as well as 1:250,000 and 1:1,000,000 scales for all of Great Britain.

FUGAWI UK lets you plot routes and tracks, create and save waypoints and use a GPS in real time, with a PC, laptop, Pocket PC or Palm! The bonus Gazetteer lets you search for place names and the included elevation data lets you calculate track profiles on your PC.

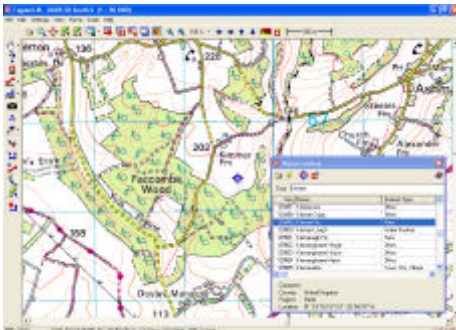
Best of all, **FUGAWI UK** maps are seamless (no edges), within each region and are the highest quality map imagery available for £49.00!

Available at leading outdoor retailers, map stores, or online at www.fugawi.com





Plot a trail using your mouse and view its elevation profile, length and more.



Contains a searchable Gazetteer of over 250,000 place names, historic sites, farms and more.

Collect all four...

Each volume is seamless within the area shown. Equivalent to over 50 Landranger maps and 8 Travelmaster maps.

That's over £300.00 of equivalent paper maps for only £49.00 (incl. VAT)



Vol. 1 North £49



Vol. 2 Mid-North £49



Vol. 3 Mid-South £49



Vol. 4 South £49

FUGAWI UK allows you to:

- Navigate in real time using popular GPS receivers
- Upload/Download waypoints, routes and tracks to your GPS receiver (Garmin, Magellan, Lowrance, etc.), Palm or Pocket PC.
- Export maps to a Pocket PC or Palm PDA device*
- Print sections of maps*
- Draw routes and tracks freehand
- High definition zooming with FineView™
- Calculate distances (using the measure tool or the trip odometer)
- Navigate using geographical directions
- Search for and find place names
- View elevation profiles
- Link digital photos and sound files to your maps
- DisplayUp™ option: choose to display map north-up, map-up, course-up or route-up (PC version only)

FUGAWI UK contains the following:

- FUGAWI UK Software for PC
- FUGAWI UK Software for Palm OS
- FUGAWI UK Software for Pocket PC
- 1:50,000 U.K Ordnance Survey maps for the volume purchased
- 1:250,000 Ordnance Survey maps for all of Great Britain
- 1:1,000,000 Ordnance Survey 'Miniscale' map for all of Great Britain
- Ordnance Survey Gazetteer for 1:50,000 maps
- Digital Elevation data for all of the Great Britain
- Quick start manual
- Online help files

Requirements

- Personal use only
- 486 processor or above
- Windows 95, 98, ME, 2000, XP or NT4
- 16 MB RAM?30 MB on hard drive
- CD-ROM drive
- 256 colour display
- mouse or other pointing device
- OPTIONAL: Palm or Pocket PC organizer (Palm O/S 3.5 or greater, or Windows Pocket PC 2002).
- Does not contain GPS, cable or PDA
- * PDA map size restricted to 1600 KM² per file. Printing restricted to PC screen size.