

FITMENT INSTRUCTIONS



Land Rover Discovery 3 Spare Wheel Carrier

Introduction

This Installation should be performed by a technician familiar with Land Rover's policy and general work procedures. The technician should also be familiar with the Land Rover Discovery 3.

Care should be taken to ensure that all bolts, screws, securing devices and retained clips are correctly loosened and kept for reassembly.

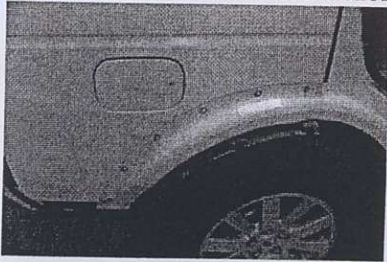
The following steps are a summary of the installation, and are described in detail below.

- | | |
|--------|--|
| Step 1 | Remove the Rear bumper. |
| Step 2 | Cut the edge off the right side of the steel bumper. |
| Step 3 | Mount the Chassis bracket to the rear steel bumper. |
| Step 4 | Cut two holes in the main plastic bumper using the supplied templates. |
| Step 5 | Refit the rear bumper |
| Step 6 | Fit the Carrier arm through the bumper on to the chassis Bracket. |
| Step 7 | Fit the shock and supporting Brackets |
| Step 8 | Fit the spare wheel and test for smooth operation. |
| Step 9 | Optional: Fit the trim plates with the rivets provided. |

Detailed description of Steps 1 through 8

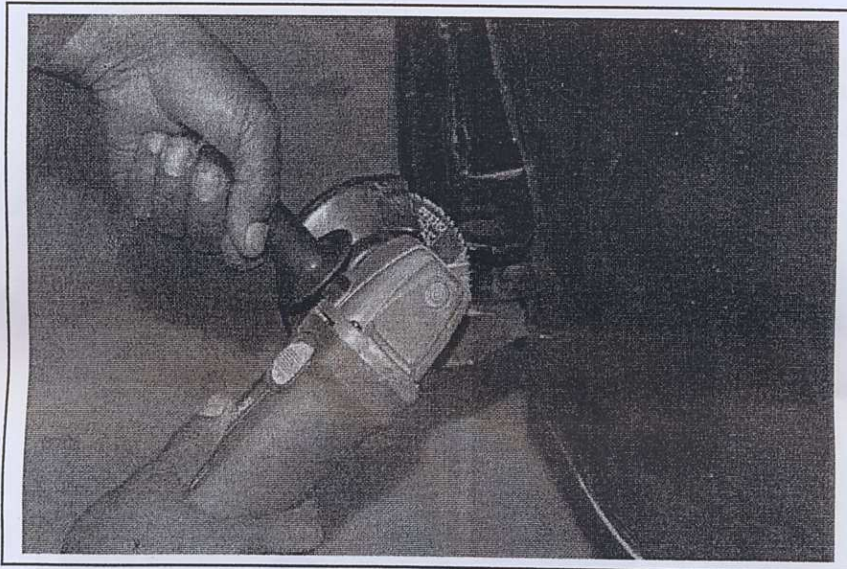
Step 1 Rear bumper removal

- 1.1 Remove the rear tail lights.
- 1.2 Remove the rear section of the wheel flairs.
- 1.3 If fitted, remove the rear mud flaps.
- 1.4 Lift up the flap on the top of the rear tailgate to undo screws in the top section of the bumper.
- 1.5 If the vehicle is fitted with park distance controls ensure that the electrical plugs are disconnected before the bumper is fully removed from the vehicle.



Step 2 **Cut off right corner section of the rear steel bumper**

- 2.1 **Before the steel bumper is cut ensure that the vehicle is adequately covered to prevent sparks from damaging the paint, glass and plastic surfaces and in such a manner as to prevent a fire from occurring.**
- 2.2 There is a large hole on both sides of the steel bumper. Cut the steel bumper as per the picture to the right of the RHS large hole – ie the offcut portion excludes the hole.
- 2.3 Be sure not to overcut the steel bumper – If necessary; use the Chassis Bracket as a template. Only enough steel off the corner of the bumper needs to be cut away to ensure that the holes for fixing can still be drilled and that the bearing housing portion of the chassis bracket is unrestricted.
- 2.4 Remove all burs and paint the cut surfaces so as to prevent rust from occurring on the cuts.

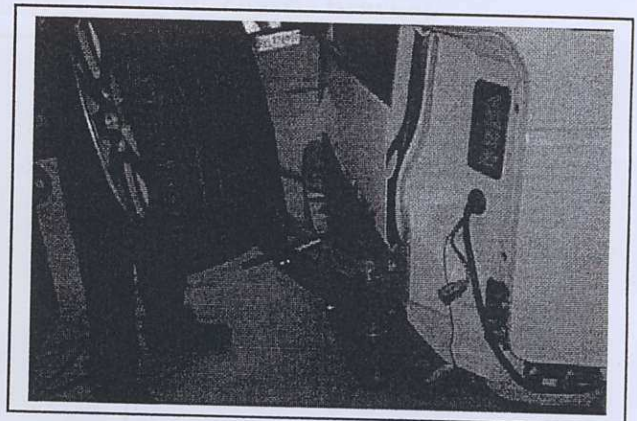
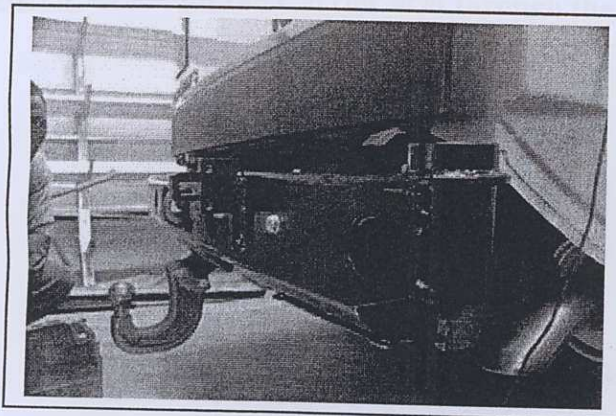
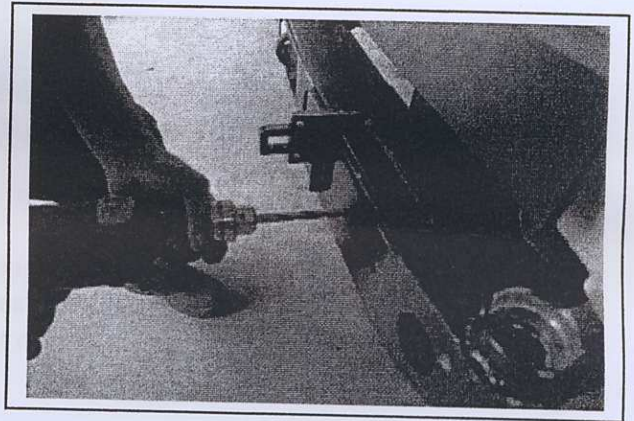
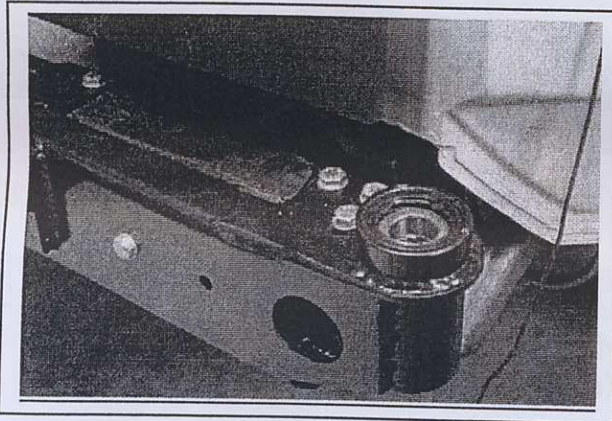


Cut and grind the steel bumper



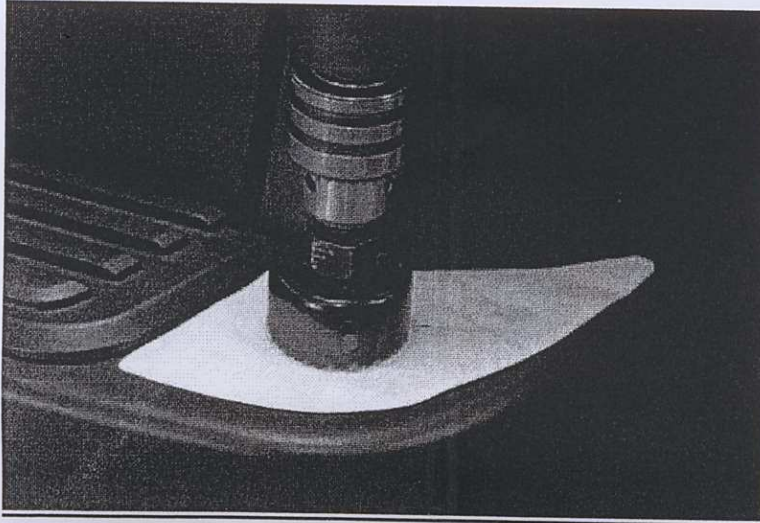
Step 3 **Fitting of the Chassis Bracket.**

- 3.1 Fit the chassis bracket over the right side of the steel bumper and align the holes to the steel bumper.
- 3.2 Fasten the chassis bracket using the supplied bolts and nuts which have been specially prepared with fitment tails. Nip the top bolts up first to ensure that the bracket is level with the top of the bumper.
- 3.3 Drill the holes that are not in the steel bumper to match the holes in the chassis bracket.
- 3.4 At the bottom of the chassis bracket are 6 holes. It is only necessary to use two holes. Drill the holes that correspond to where the chassis bracket is up against the steel bumper. **(usually the centre holes are correct)**
- 3.5 Fasten the bolts intermittently and ensure that all bolts are correctly tightened.
- 3.6 Ensure that the top bearing and oil seal is inserted in the chassis bracket before the bumper is replaced.
- 3.7 It is imperative that the chassis bracket be fastened using all 9 bolts (M10x25), supplied and that there is no play or movement in the chassis bracket. This can be checked by placing the carrier arm in position on the chassis bracket then apply a force up and down on it before the bumper is reinstalled.



Step 4 **Cut two holes in the main plastic bumper using the supplied templates.**

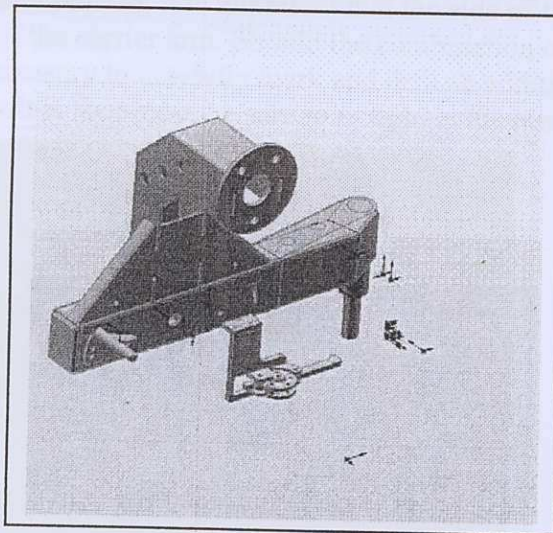
- 4.1 Cut two holes in the main plastic bumper using the supplied templates provided. These holes are to ensure that the carrier latch catch protrudes through the plastic bumper and that the hole in the top of the plastic bumper aligns with the bearings in the chassis bracket.



Step 5 **Refit the rear bumper**

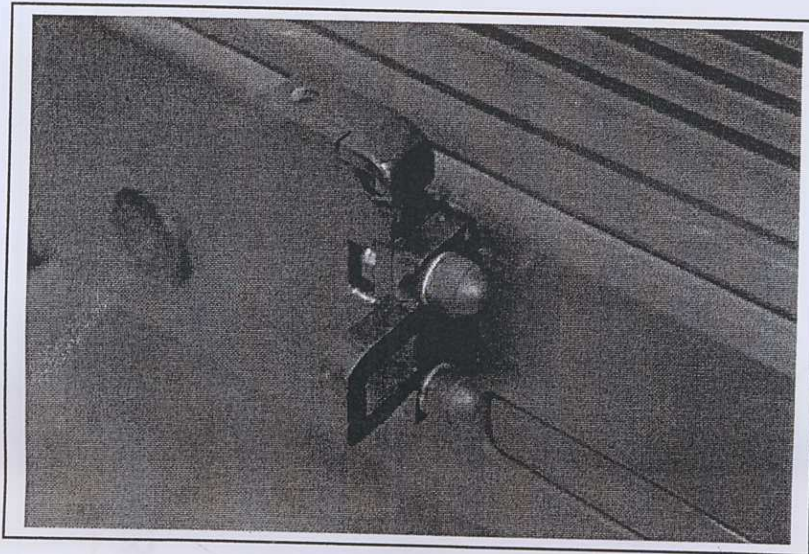
- 5.1 Replace the rear bumper in the reverse sequence as to its removal.
5.2 Make sure that the Park distance control wires and antenna wires are replace and connected before the bumper is refitted. (Not doing this will result in the bumper being removed again to do the connection).

Step 6 **Fit the Carrier arm through the bumper on to the chassis Bracket.**



- 6.1 Slide the carrier arm through the bearings, it might be necessary to hold the lower bearing assembly by hand while the arm shaft is being inserted through the top bearing.
- 6.2 When the arm is in position insert the bottom seal, O-ring, disk and nut.
- 6.3 Tighten the bottom nyloc nut until there is no wobble in the carrier arm. Do not overtighten as the carrier arm must be able to rotate freely. An easy way to do this is to get someone to open and close the carrier arm while the nut is held with a spanner on the underside of the carrier.

Step 7 **Fix the shock and supporting Brackets to chassis bracket.**



Step 8 **Fix the spare wheel and test for smooth operation.**

The wheel plate can be adjusted telescopically to allow for different tyre widths. Loosen the pinch bolt under the square tube arm and align the nearest set of cross holes. In order to ensure minimal vibration, it is important that the side of the tyre presses up against the vertical portion of the carrier arm. Should the combination of cross holes not accomplish this, it will be necessary to carefully mark and drill an additional hole. Once the cross bolt is tightened, be sure to re tighten the pinch bolt.



TEMPLATES FOR CUTTING THE BUMPER

Cut the bumper

Drill Pilot hole

52mm Hole Saw

Align to left hand edge of the RH rear reflector

