

Land Rover Discovery 4 – Upper Tailgate Manual Release

Key Design Features of Manual Release:

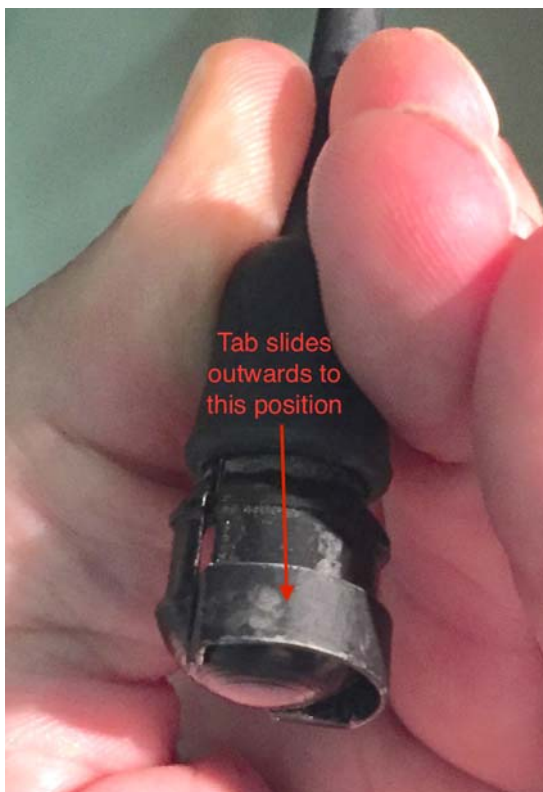
- Installed with electric release operational (tailgate open).
- Run through to 2nd row seats so as to be accessible if cargo area is loaded with a drawer unit and/or cargo barrier.
- Uses a standard bicycle cable so as to run around corners and be tucked out of the way. Cable length ~2.5m from a tandem bike.
- Refer last page for list of required parts.

Step One – Dismantle Tailgate

- Remove top plastic trim – 4 x screws and lift straight up off clips



- Undo retractable stays by unclipping socket from ball
- The spring tab on socket slides outwards as shown in photo below



Land Rover Discovery 4 – Upper Tailgate Manual Release

- Disconnect and remove ball screws as shown in photo below



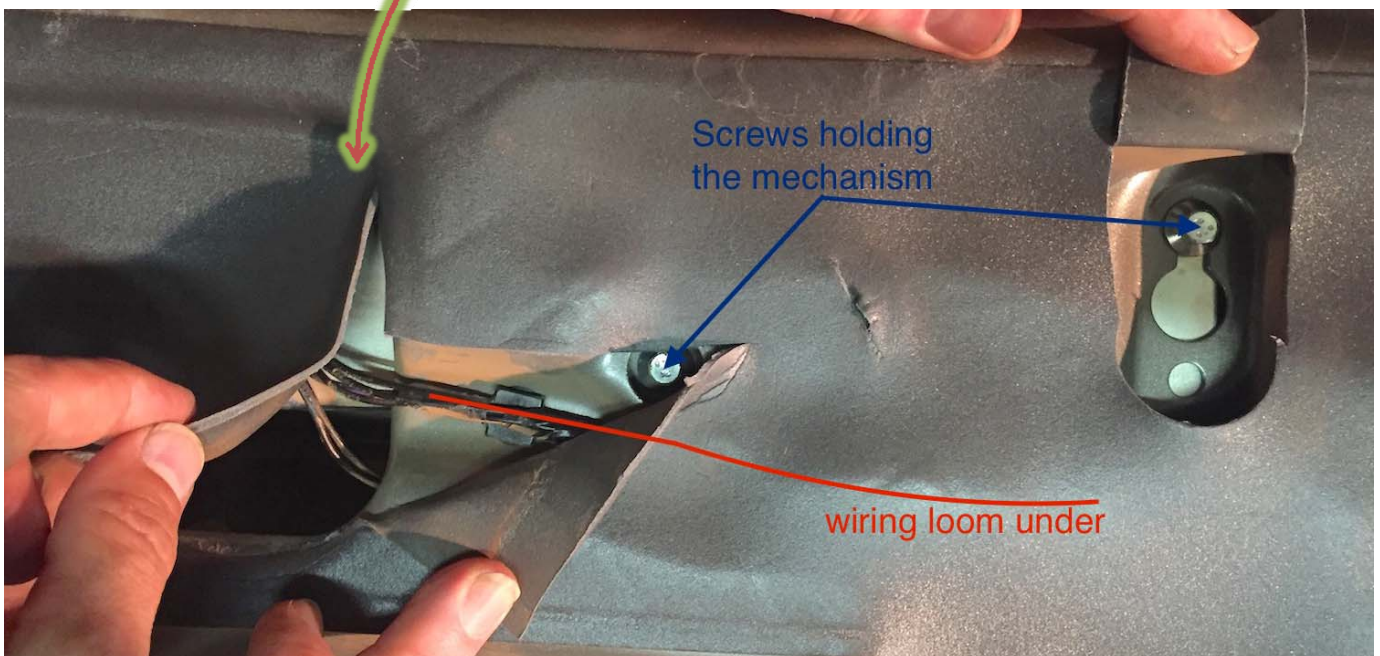
- Remove tailgate cover
- Underside shown in photo below, note the 8 x white plugs
- Levering close to each clip will pop them out. Plastic trim removal tool is the best but large screwdriver will work.



Land Rover Discovery 4 – Upper Tailgate Manual Release

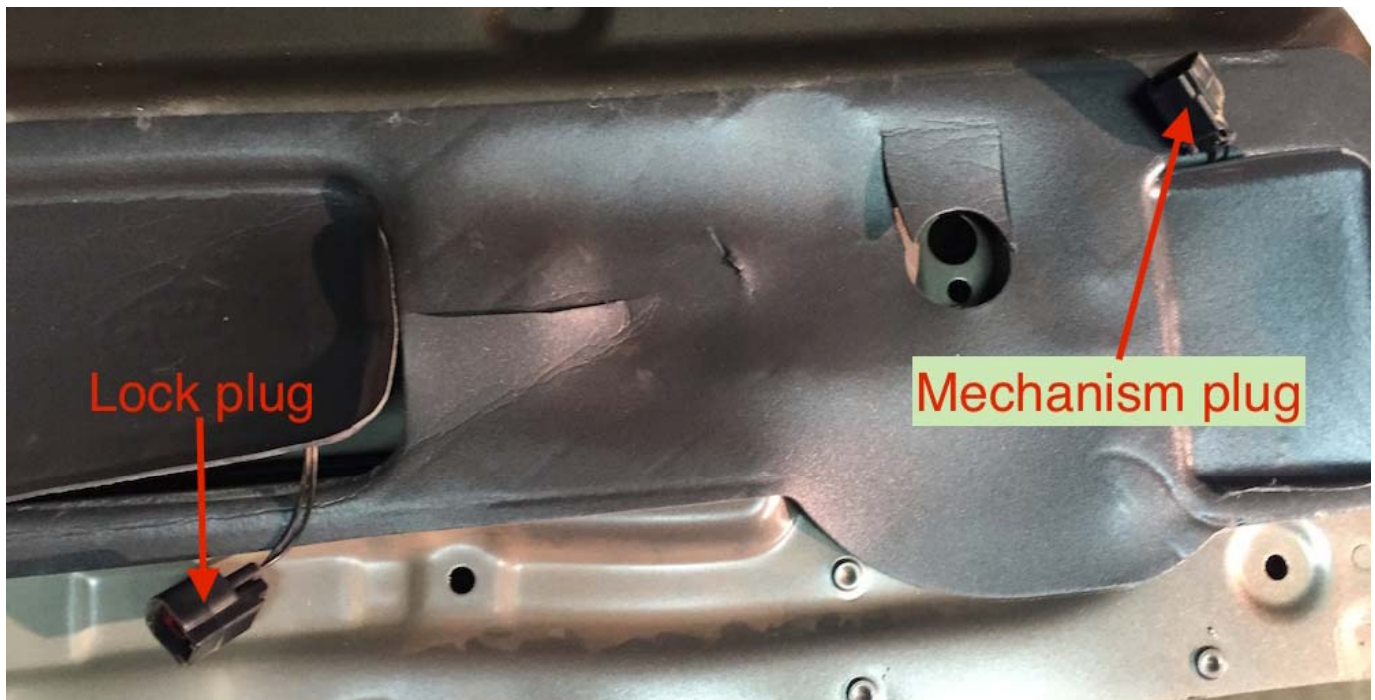
Step Two – Dismantle & Remove Lock and Mechanism

- Lock mechanism is under the grey membrane, which must be cut and later repaired with gaffer tape.
- Wiring looms run close to and in some places are stuck to the membrane; CARE MUST BE TAKEN WHEN CUTTING MEMBRANE
- Note the membrane is not a dust-proof cover, there is dust under.
- Cut the membrane to expose screws to be undone.
- Screws are loosened so that mechanism can slide towards rear and then drop down inside tailgate. Screws do not require removal.



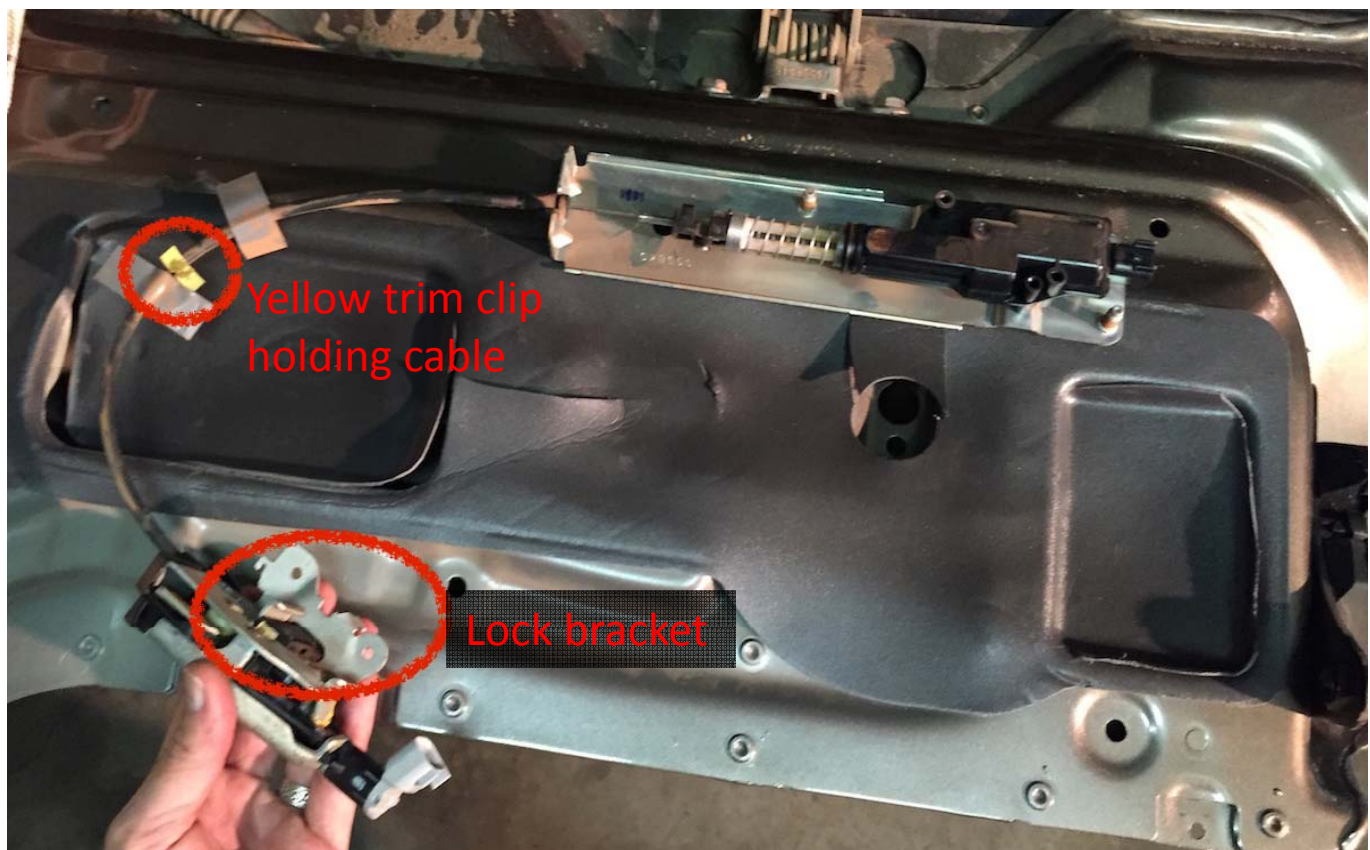
Land Rover Discovery 4 – Upper Tailgate Manual Release

- Release the two wiring plugs as shown in 1st photo.
- Note the cuts in the membrane for access to plugs.



Land Rover Discovery 4 – Upper Tailgate Manual Release

- Undo 3 x Torx screws holding lock and lock plate shown in 1st photo.
- The complete mechanism can now be withdrawn from tailgate (2nd photo). Note the yellow trim clip holding the cable.



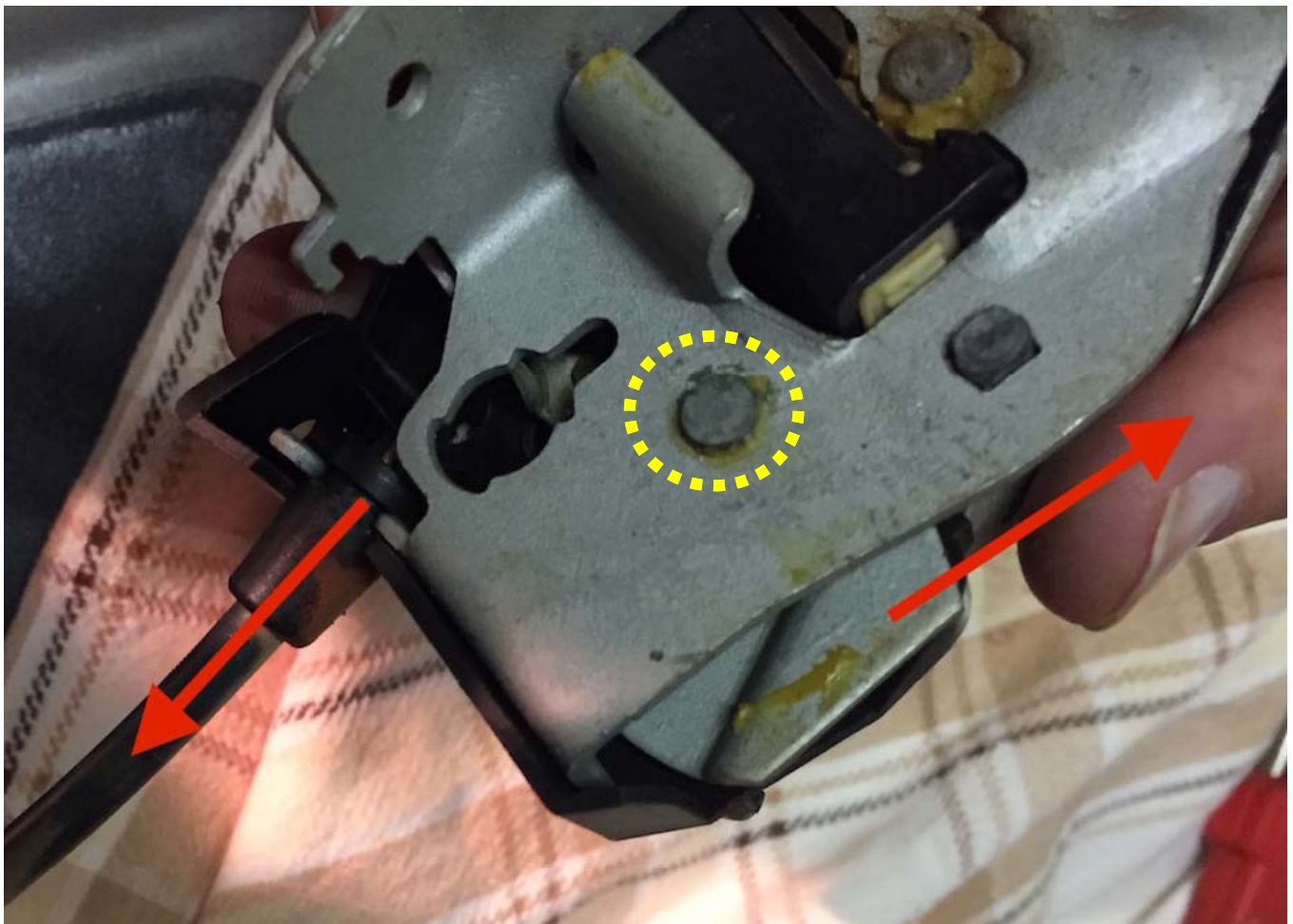
Yellow trim clip
holding cable

Lock bracket

Land Rover Discovery 4 – Upper Tailgate Manual Release

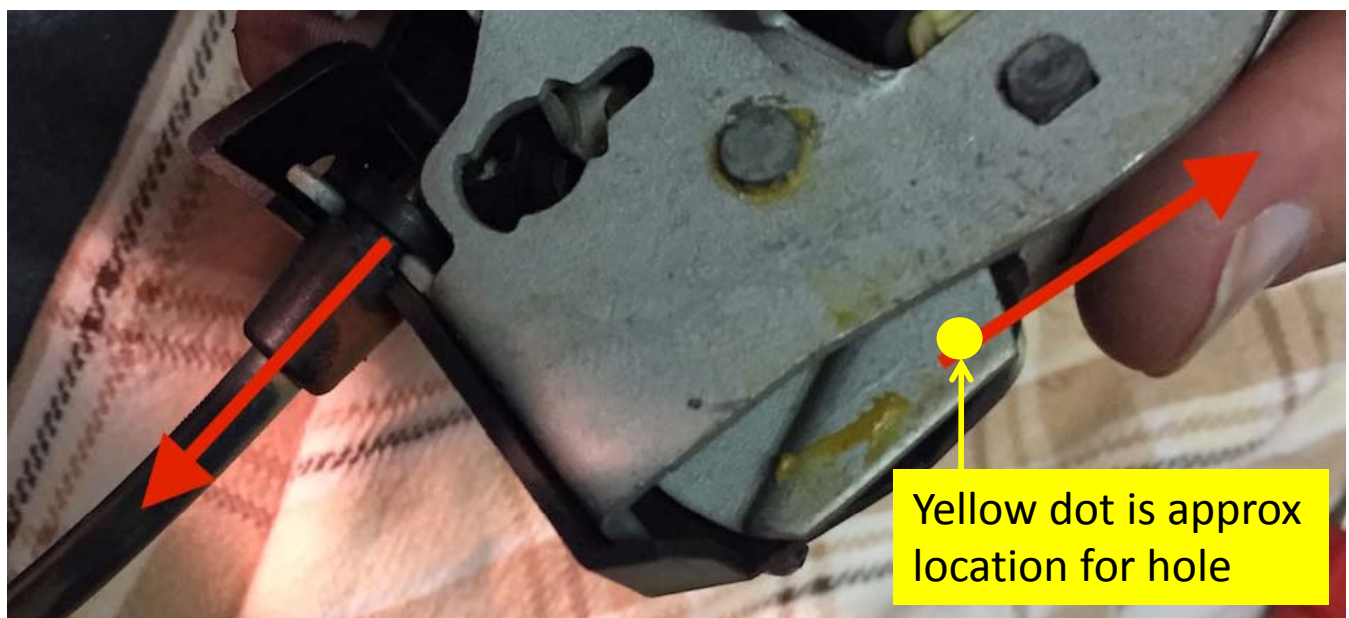
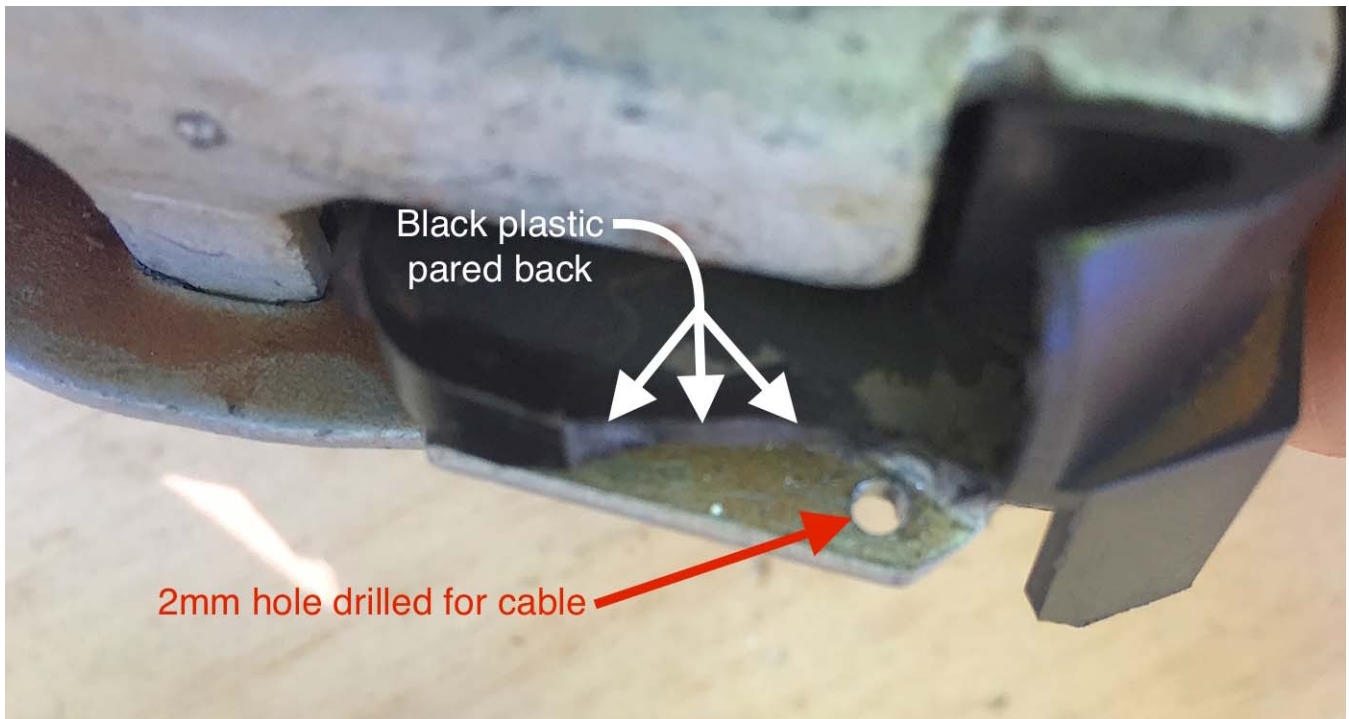
Step Three – Lock Preparation for Manual Release

- Now the lock can be prepared for the manual release cable.
- The lock is actuated by the factory cable in the black sheath pulling to the left in the photo below (arrow pointing to bottom left).
- The manual release will be added to pull to the right in the photo (arrow pointing towards thumb).
- Both actions release the lock because it pivots (circled in yellow).
- A hole is required to attach the manual cable.



Land Rover Discovery 4 – Upper Tailgate Manual Release

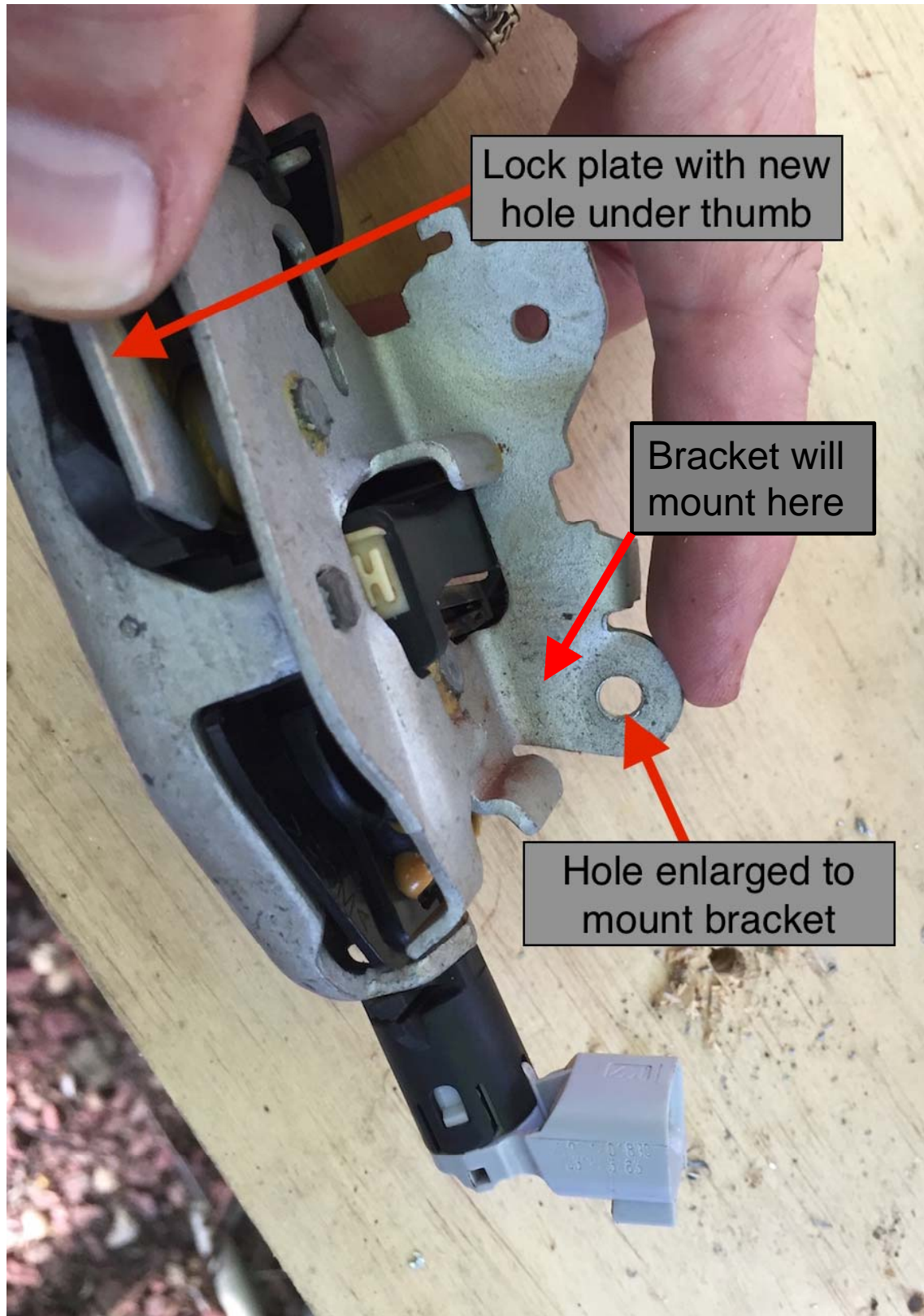
- Drill a 2mm hole in the lock plate as shown in the 1st photo below.
- This view is reversed from the previous page, looking at the lock from the opposite side. The black plastic is just visible behind the plate in the previous photo, which is also added as the 2nd photo below.
- The black plastic piece needs to be trimmed back so that the end of the manual release cable does not foul as the lock pivots during normal operation.



Land Rover Discovery 4 – Upper Tailgate Manual Release

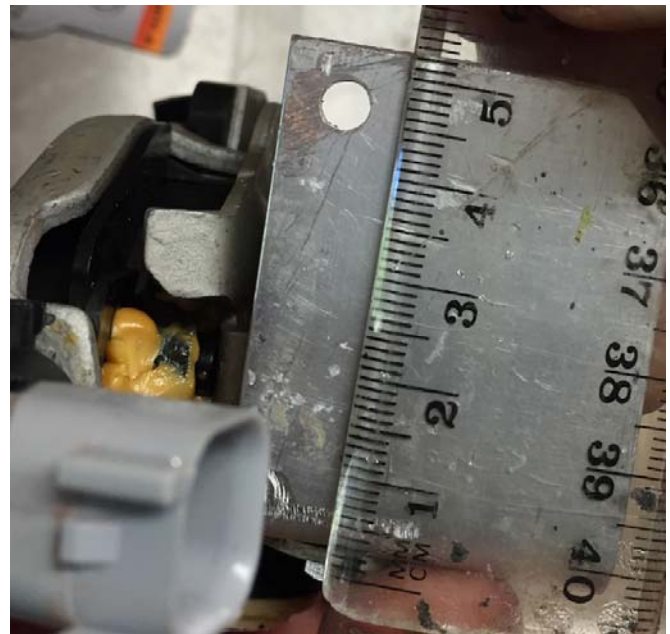
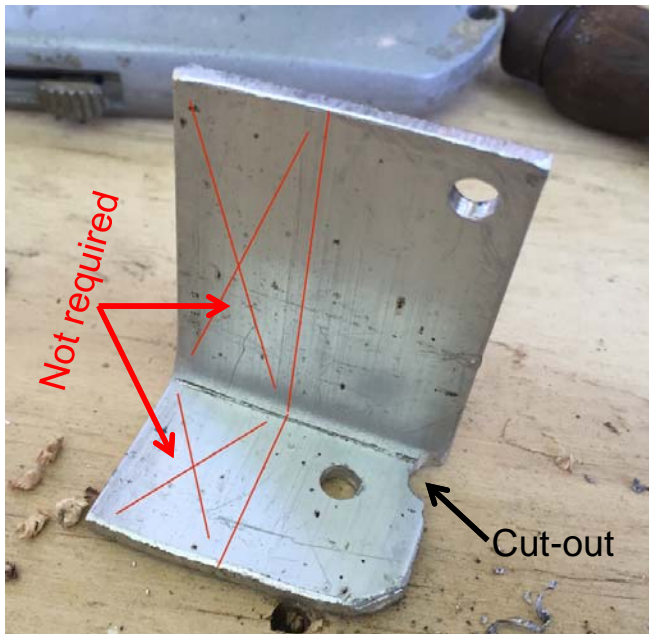
Step Four – Manual Release Cable Bracket

- Bracket is an “L” shape bolted to an unused hole in the lock.
- M5 bolt was used.



Land Rover Discovery 4 – Upper Tailgate Manual Release

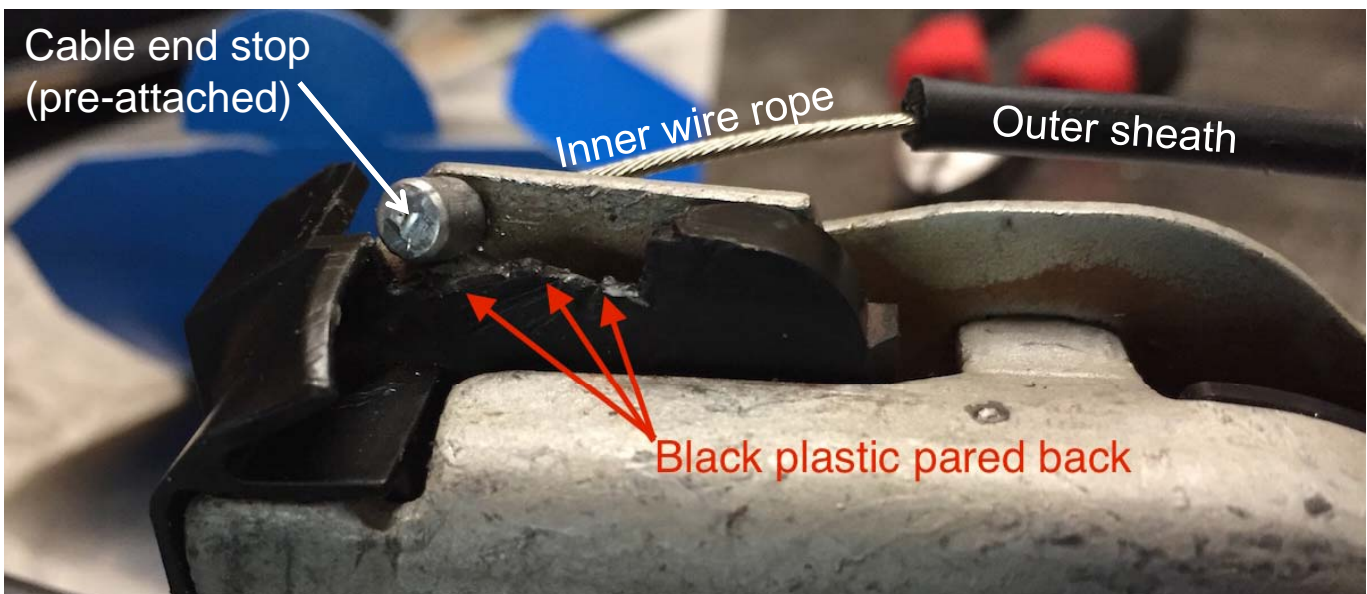
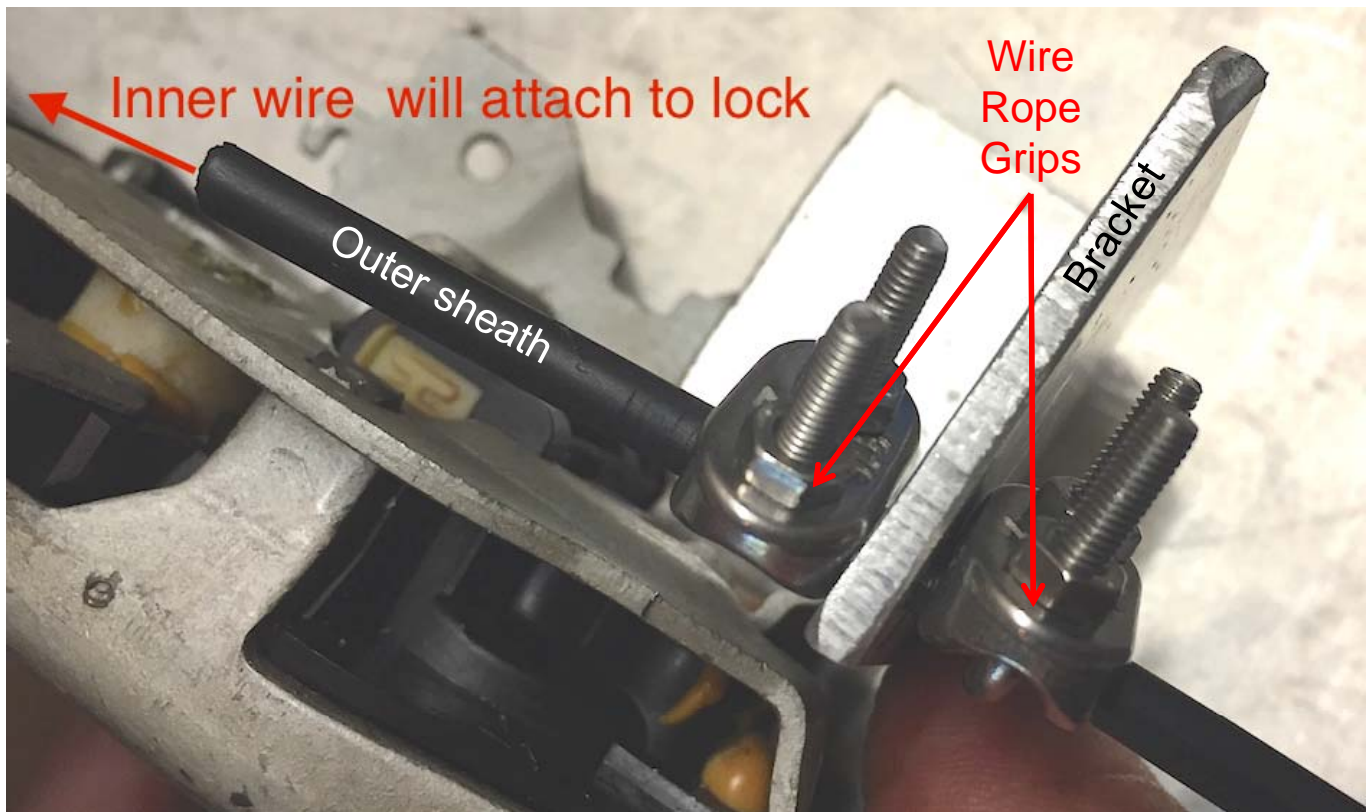
- The bracket shown is aluminium flat bar 40x3 as this was already available but a smaller piece would be sufficient, as indicated by red crosses in 1st photo.
- One hole is drilled for mounting bracket to lock plate. Second hole is for passing the manual release cable through and fixing in place.
- Note the cut-out at the bend line. This ensures that the bracket sits in against the lock plate.
- Maximum height of the vertical leg is 52mm otherwise it will clash with the tailgate when installed. 50-51mm sufficient but too short and the manual cable will rub over the lock body.



Land Rover Discovery 4 – Upper Tailgate Manual Release

Step Five – Manual Release Cable Attachment

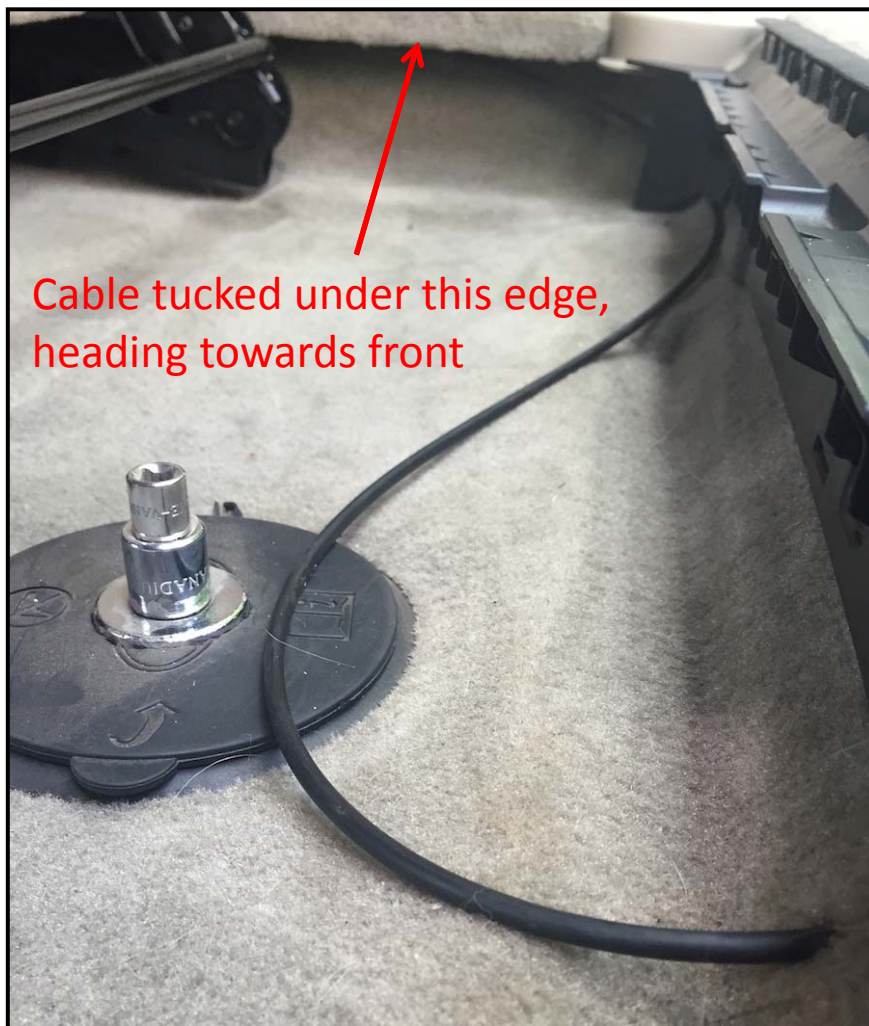
- The cable outer sheath (black) is attached using 2 x 2mm wire rope grips that hold it in place, as shown in the 1st photo.
- The cable inner (wire rope) is passed through the hole in the lock plate and then through the outer sheath, as shown in the 2nd photo.
- Second photo also shows the pared back black plastic, required to allow the wire rope end to move unhindered.



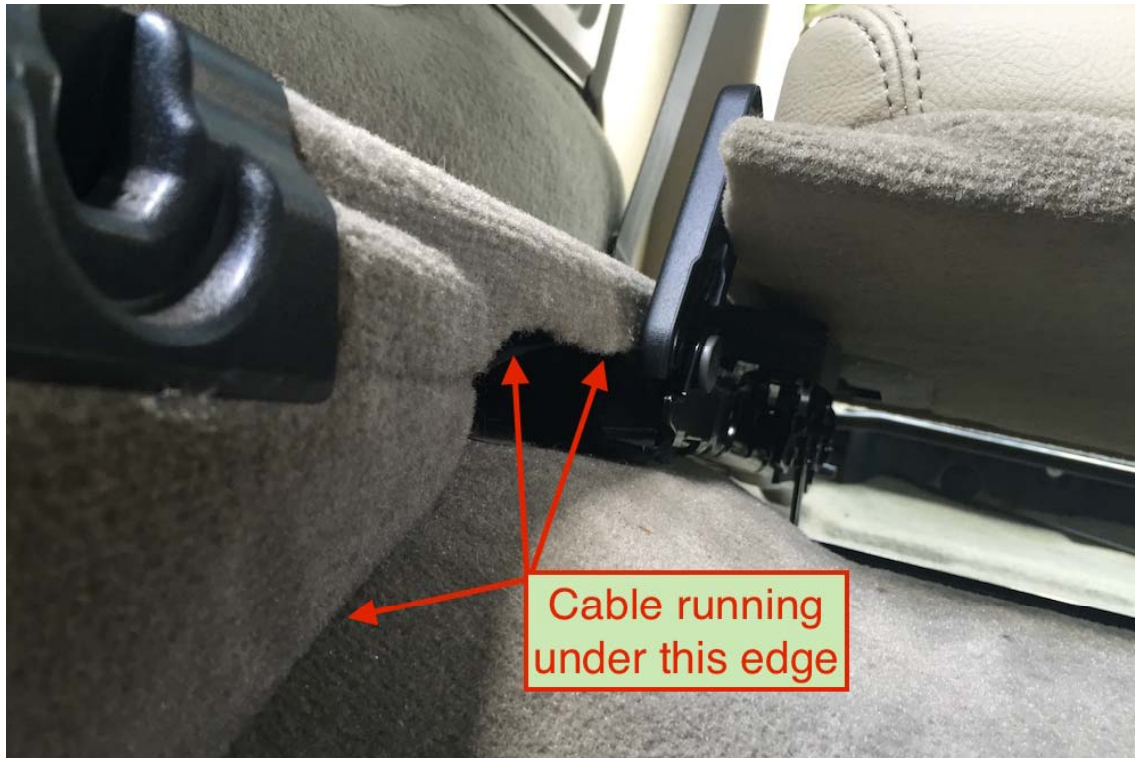
Land Rover Discovery 4 – Upper Tailgate Manual Release

Step Six – Running Manual Release Cable to 2nd Row

- The manual cable can now be run into the vehicle and forward to the 2nd row seats.
- Running the cable inside the factory rubber sheath was found to be too difficult, so it was run through the grommets but outside sheath, as shown in 1st photo.



Land Rover Discovery 4 – Upper Tailgate Manual Release



- The cable is ended with a standard bike cable end cap.
- The cable pull handle is tucked under the floor mat for easy access



Land Rover Discovery 4 – Upper Tailgate Manual Release

Step Seven – Cable Pull Handle

- There are many options for a handle but the handle shown is two pieces of alloy rod and a bolt.



Required Parts

- Bicycle Cable 2.5m (c/w inner wire/outer sheath/end stop/cap) – 1 off
- Flat plate for bracket (75 x 25 x 2 or similar) – 1 off.
- Wire Rope Grips (2mm) – 2 off.
- M5 bolt & Nyloc nut (or spring washer) for bracket – 1 off.
- Rod for handle (3mm x 75mm or similar) – 2 off.
- Bolt, nut and 2 washers for handle (M6 or M8) – 1 off.