

Common Rail Diesel



Table of Content

Replacement Parts.....Page 2

Repair PartsPage 6

PCR 2.0 DW 10 TD – Overview.....Page 8

PCR 2.0 DV 4 TD – OverviewPage 9

PCR 2.3 DW 10 BTED – Overview.....Page 10

Application - Overview DW 10 TD / DV 4 TD.....Page 11

Application - Overview DW 10 BTED / Lion V6.....Page 12

Application - Overview K9K / Lynx.....Page 13

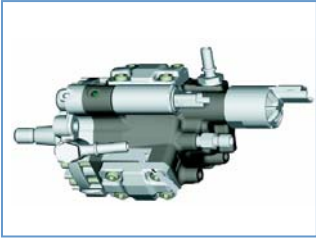
Application - Overview – sorted by manufacturer.....Page 14

Systems - Overview.....Page 15

Cross reference List (October 2007).....Page 16

Notes.....Page 20

Replacement Parts



High Pressure Pumps

Order number DW 10 TD.....	5WS40018-Z
Order number DV 4 TD.....	5WS40008-Z
Order number DW 10 BTED.....	5WS40019-Z
Order number DW 10 BTED Volvo	5WS40163-Z
<i>will be replaced by:</i>	
Order number DW 10 BTED Volvo (NEW).....	A2C59511600
Order number Lion V6.....	A2C59511314
Order number K9K.....	A2C59511605
Order number Lynx.....	A2C59511609



Injectors

Order number DW 10 TD.....	5WS40000-Z
Order number DV 4 TD Euro3.....	5WS40148-Z
Order number DV 4 TD Euro4.....	5WS40149-Z
<i>will be replaced by:</i>	
Order number DV 4 TD Kyocera Euro 4.....	A2C59511612
Order number DW 10 BTED Class 4.....	5WS40156-4Z
Order number DW 10 BTED Class 5	5WS40156-Z
Order number DW 10 BTED Class 6.....	A2C59511601
Order number DW 10 U MFMA.....	A2C59511602
Order number DW 10 BTED MFMA.....	A2C59511603
Order number Lion V6 Euro 3 (Jaguar).....	A2C59511315
Order number Lion V6 Euro 4 (Jaguar+PSA).....	A2C59511316
Order number Lion V6 (Landrover).....	A2C59511364
Order number K9K.....	A2C59511606
Order number Lynx.....	A2C59511610
Order number Lynx (Injector V227).....	A2C59511611

Replacement Parts



Set High Pressure Pipes

Order number Pipe Pump DW 10 TD.....5WS40003-Z *

Order number Pipe Pump DW 10 BTED.....5WS40040-Z *



Order number Pipe Cyl. 1 + 3 DW 10 TD.....5WS40004-Z *

Order number Pipe Cyl. 1 + 3 DW 10 BTED.....5WS40042-Z *



Order number Pipe Cyl. 2 + 4 DW 10 TD.....5WS40005-Z *

Order number Pipe Cyl. 2 + 4 DW 10 BTED.....5WS40043-Z *

** only for welded rails until 11/2004*



Rail

Diverter Rail with High Pressure Sensor

Order number Lion V6.....A2C59511317



Left-hand Rail

Order number Lion V6.....A2C59511318

Right-hand Rail

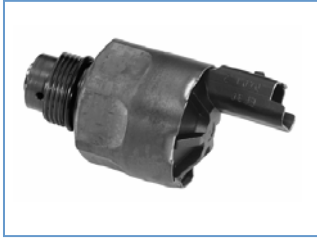
Order number Lion V6.....A2C59511319



Rail with High Pressure Sensor

Order number K9K.....A2C59511607

Replacement Parts



Pressure Control Valve (PCV)

Order number.....X39-800-300-005Z



Volume Control Valve (VCV)

Order number (*screwed*).....X39-800-300-006Z

Order number (*flanged*)X39-800-300-018Z



Set Connectors High Pressure Pump

Order number DW 10 TD.....X39-800-300-002Z

Order number DV 4 TD.....X39-800-300-015Z

Order number DW 10 BTED.....X39-800-300-016Z

Order number DW 10 BTED VolvoX39-800-300-017Z



Set Safety Caps

Order number DW 10 TDX39-800-300-003Z

Order number DV 4 TD.....X39-800-300-012Z

Order number DW 10 BTED.....X39-800-300-013Z

Order number DW 10 BTED Volvo.....X39-800-300-014Z

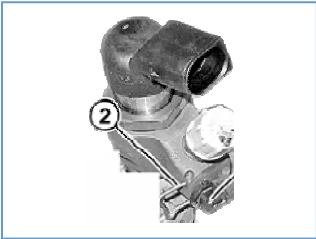
Replacement Parts



Copper Rings ⑦

(Set of 100 Pieces)

Order number DW 10 TD.....X11-800-002-001Z
Order number DW 10 BTED.....X11-800-002-002Z
Order numberX11-800-002-003Z
Order number DV 4 TD.....X11-800-002-004Z



Leakage-Clips ②

(Set of 100 Pieces)

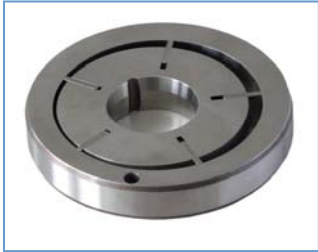
Order number DV 4 TD.....X11-800-001-001Z
Order number DW 10 BTED.....X11-800-001-002Z
Order number DW 10 TD.....X11-800-001-003Z



Mounting bracket

Order number Lion V6.....A2C59511320

Repair Parts *(not salable)*



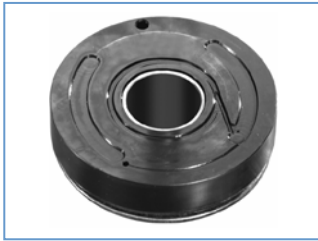
Repair Kit Internal Transfer Pump (ITP)

Order numberX39-800-300-010Z



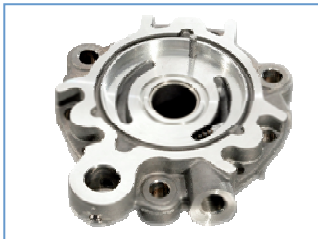
Repair Kit High Pressure Elements

Order number.....X39-800-300-008Z



Repair Kit Thrust Plate

Order numberX39-800-300-011Z



Repair Kit Flange

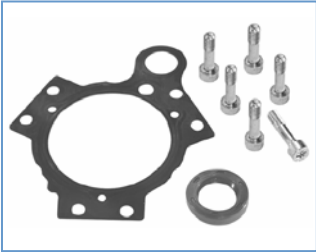
Order number DW 10 TDX39-800-300-009Z

Order number DV 4 TD.....X39-800-300-021Z

Order number DW 10 BTED.....X39-800-300-022Z

Order number DW 10 BTED Volvo.....X39-800-300-030Z

Repair Parts *(not salable)*



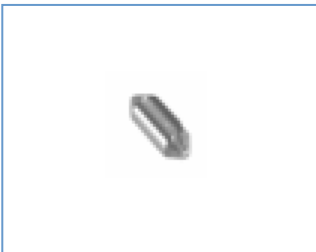
Gasket Kit Flange

Order number DW 10 TD.....X39-800-300-001Z
Order number DV 4 TD.....X39-800-300-019Z
Order number DW 10 BTED.....X39-800-300-020Z



Gasket Kit High Pressure Elements

Order number.....X39-800-300-004Z



Cylinder Roller

(Set of 100 Pieces)

Order number.....X39-800-300-023Z

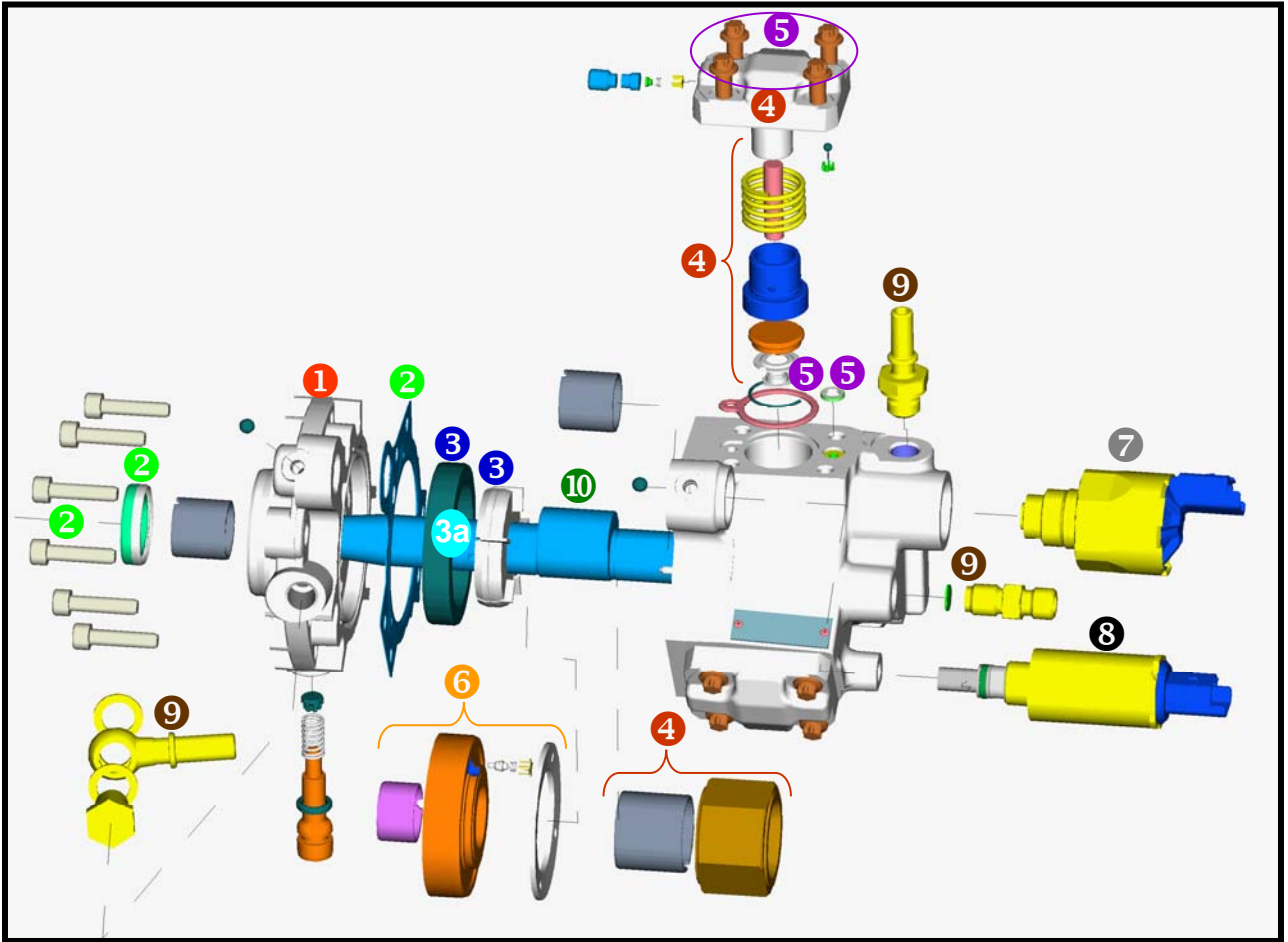


Cam Shaft

Order number DW 10 TD.....A2C59511247
Order number DV 4 TD.....A2C59511248
Order number DW 10 BTED.....A2C59511249

Siemens VDO Common Rail

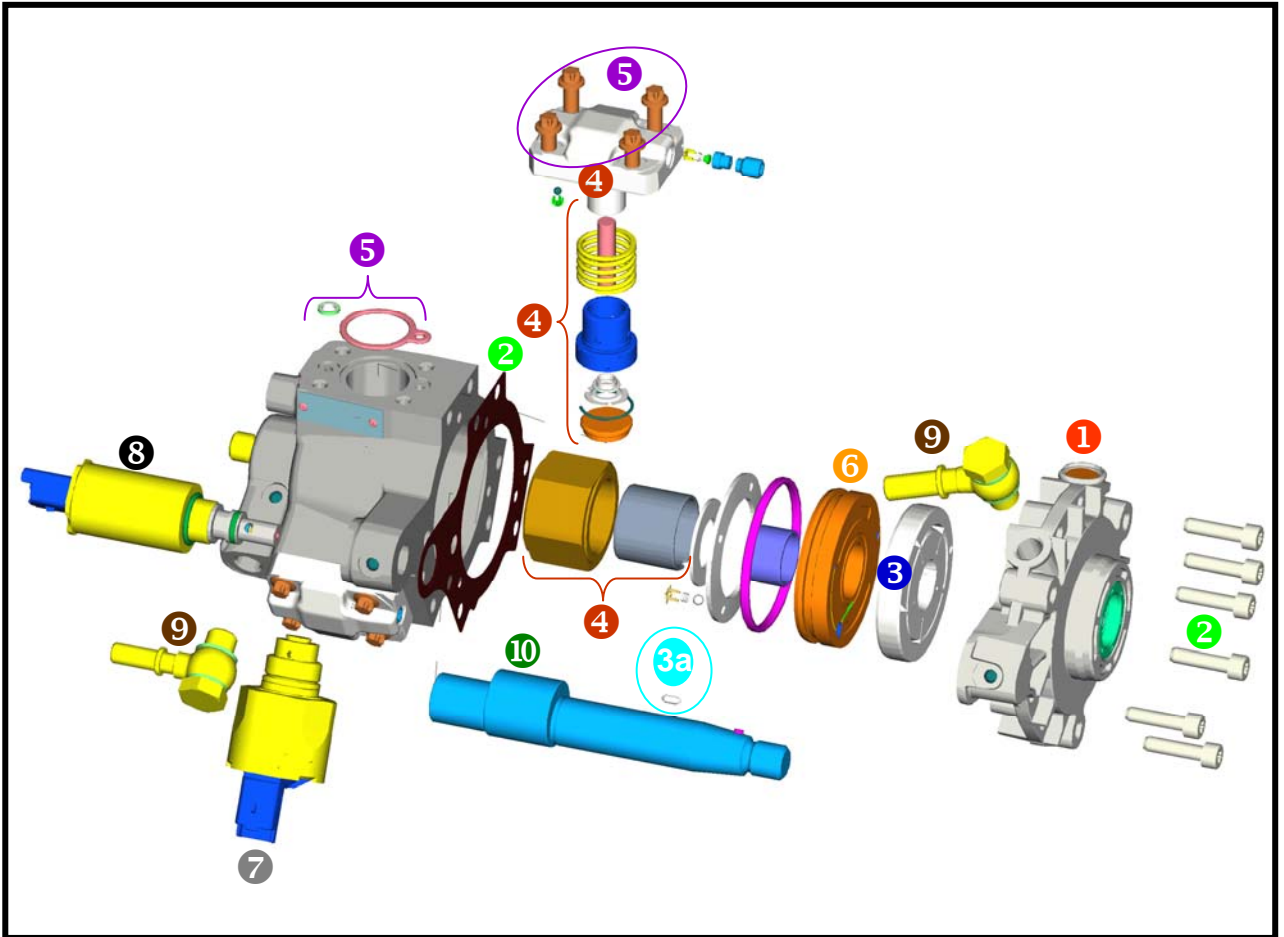
PCR 2.0 DW 10 TD - Overview



- | | |
|--|--|
| <p>1 Repair Kit Flange
X39-800-300-009Z</p> <p>2 Gasket Kit Flange
X39-800-300-001Z</p> <p>3 Repair Kit Internal Transfer Pump (ITP)
X39-800-300-010Z</p> <p>3a Cylinder Roller
X39-800-300-023Z</p> <p>4 Repair Kit High Pressure Elements
X39-800-300-008Z</p> <p>5 Gasket Kit High Pressure Elements
X39-800-300-004Z</p> | <p>6 Repair Kit Thrust Plate
X39-800-300-011Z</p> <p>7 Pressure Control Valve (PCV)
X39-800-300-005Z</p> <p>8 Volume Control Valve (VCV)
X39-800-300-006Z</p> <p>9 Set Connectors
High Pressure Pump
X39-800-300-002Z</p> <p>10 Cam Shaft
A2C59511247</p> |
|--|--|

Siemens VDO Common Rail

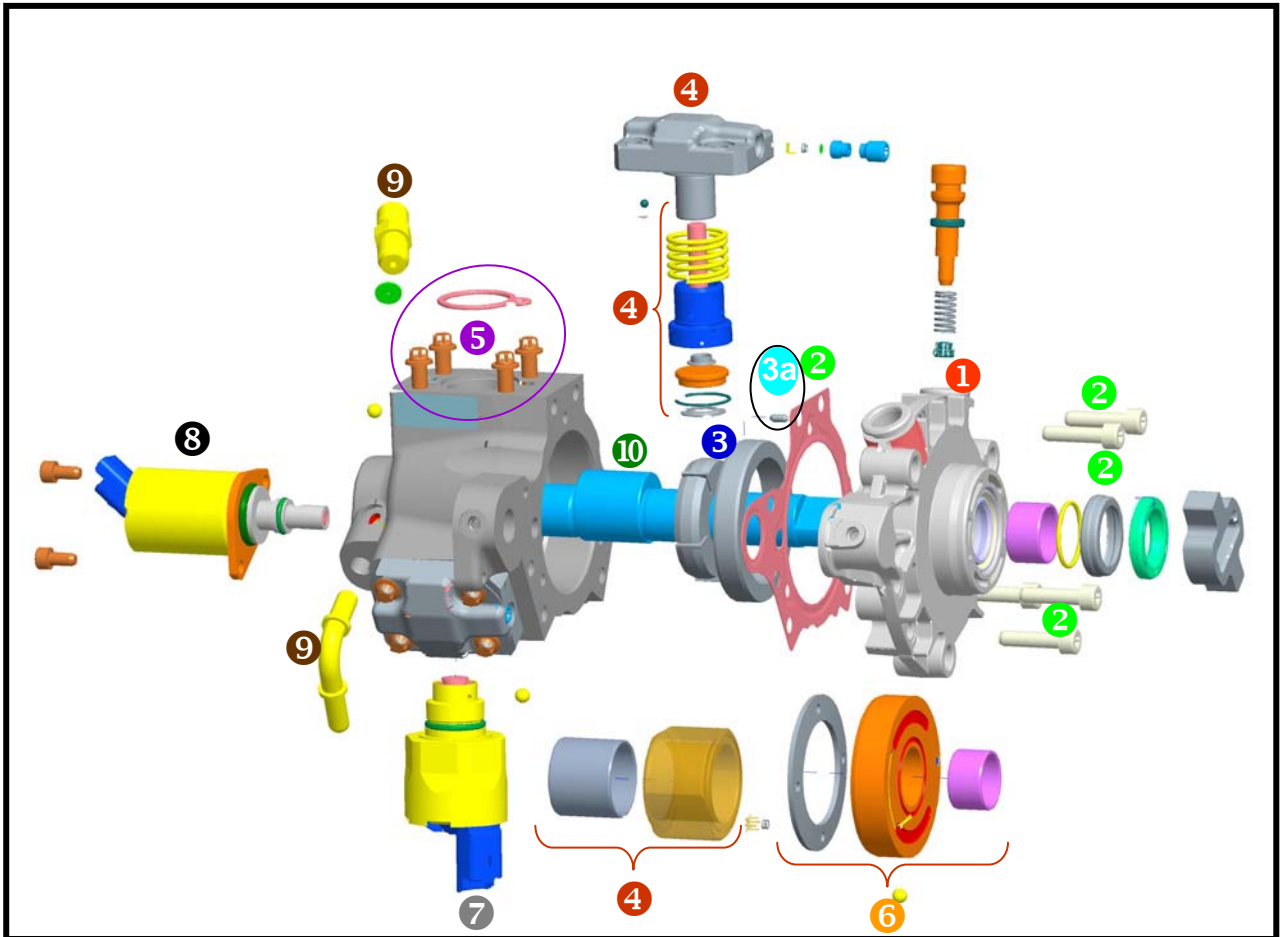
PCR 2.0 DV 4 TD - Overview



- | | |
|--|--|
| <p>1 Repair Kit Flange
X39-800-300-021Z</p> <p>2 Gasket Kit Flange
X39-800-300-019Z</p> <p>3 Repair Kit Internal Transfer Pump (ITP)
X39-800-300-010Z</p> <p>3a Cylinder Roller
X39-800-300-023Z</p> <p>4 Repair Kit High Pressure Elements
X39-800-300-008Z</p> <p>5 Gasket Kit High Pressure Elements
X39-800-300-004Z</p> | <p>6 Repair Kit Thrust Plate
X39-800-300-011Z</p> <p>7 Pressure Control Valve (PCV)
X39-800-300-005Z</p> <p>8 Volume Control Valve (VCV)
X39-800-300-006Z</p> <p>9 Set Connectors
High Pressure Pump
X39-800-300-015Z</p> <p>10 Cam Shaft
A2C59511248</p> |
|--|--|

Siemens VDO Common Rail

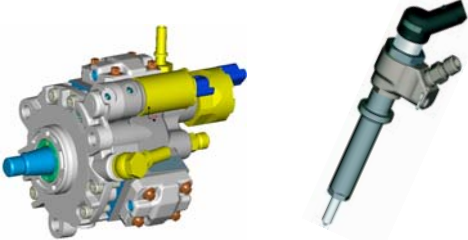
PCR 2.3 DW 10 BTED - Overview











- | | |
|---|---|
| <p>1 Repair Kit Flange
X39-800-300-022Z
X39-800-300-030Z (Volvo)</p> <p>2 Gasket Kit Flange
X39-800-300-020Z</p> <p>3 Repair Kit Internal Transfer Pump (ITP)
X39-800-300-010Z</p> <p>3a Cylinder Roller
X39-800-300-023Z</p> <p>4 Repair Kit High Pressure Elements
X39-800-300-008Z</p> <p>5 Gasket Kit High Pressure Elements
X39-800-300-004Z</p> | <p>6 Repair Kit Thrust Plate
X39-800-300-011Z</p> <p>7 Pressure Control Valve (PCV)
X39-800-300-005Z</p> <p>8 Volume Control Valve (VCV)
X39-800-300-018Z</p> <p>9 Set Connectors
High Pressure Pump
X39-800-300-016Z
X39-800-300-017Z (Volvo)</p> <p>10 Cam Shaft
A2C59511249</p> |
|---|---|

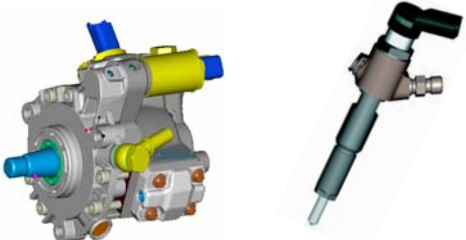
Overview










Siemens VDO PCR 2.0 DW 10 TD
2.0l | 64 kW | 2 Valve



<p>Peugeot Partner</p> 	<p>Pump 5WS40018-Z</p> <p>Injector 5WS40000-Z</p>	<p>Peugeot 307</p> 
<p>Peugeot 406 (Facelift)</p> 	<p>Pipe (Pump) 5WS40003-Z *</p> <p>Pipe (Cylinder 1+3) 5WS40004-Z *</p>	<p>Peugeot 407</p> 
<p>Citroen Berlingo</p> 	<p>Pipe (Cylinder 2+4) 5WS40005-Z *</p> <p>Leakage-Clip X11-800-001-003Z</p>	<p>Citroen C5</p> 
<p>Citroen C5</p> 		

Siemens VDO PCR 2.0 DV 4 TD
1.4l | 50 kW EURO 3 / EURO 4

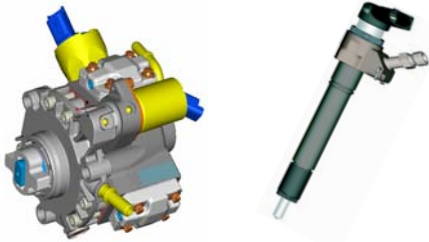


<p>Ford Fiesta</p> 	<p>Pump 5WS40008-Z</p> <p>Injector Euro 3 5WS40148-Z</p>	<p>Ford Fusion</p> 
<p>Citroen C1</p> 	<p>Injector Euro 4 5WS40149-Z</p> <p>Injector Euro 4 (Kyocera) A2C59511612</p>	<p>Peugeot 307</p> 
<p>Citroen C2</p> 	<p>Leakage-Clip X11-800-001-001Z</p>	<p>Peugeot 107</p> 
<p>Citroen C3</p> 		<p>Mazda 2</p> 
		<p>Toyota Aygo</p> 

* only for welded rails until 11/2004

Overview

Siemens VDO PCR 2.3 DW 10 BTED 2.0l | 100 kW | 4 Valve



Peugeot 307



Pump

5WS40019-Z

Pump (Volvo)

5WS40163Z

Peugeot 407



Pump (Volvo-New)

A2C59511600

Injector, Class 4

5WS40156-4Z

Injector, Class 5

5WS40156-Z

Ford C-Max



Injector, Class 6

A2C59511601

Injector DW10U-MFMA

A2C59511602

Volvo C30



Injector MFMA

A2C59511603

Pipe (Pump)

5WS40040-Z

Volvo S40



Pipe (Cylinder 1+2)

5WS40042-Z

Pipe (Cylinder 3+4)

5WS40043-Z

Volvo V50



Leakage-Clip

X11-800-001-003Z

Peugeot 607



Peugeot 807



Citroen C4



Citroen C5



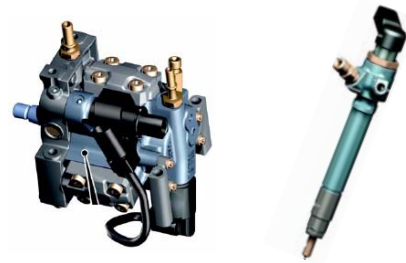
Citroen C8



Citroen Picasso



Siemens VDO PCR 2.3 Lion V6 2.7l | 4 Valve | EURO 3 / EURO 4



Peugeot 407



Pump

A2C59511314

Injector Euro 3 (Jaguar)

A2C59511315

Injector Euro 4 (Jaguar + PSA)

A2C59511316

Injector

(Land Rover)

A2C59511364

Diverter Rail

A2C59511317

Right-hand rail

A2C59511319

Left-hand rail

A2C59511318

Mounting bracket

A2C59511320

Peugeot 607



Jaguar S-Type



Jaguar XJ



Citroen C6



Land Rover Discovery



RangeRover Sport

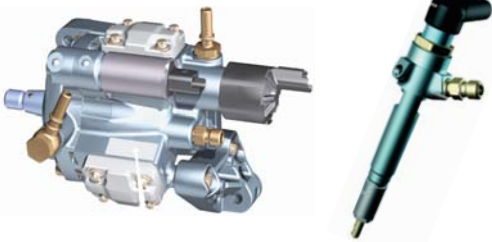


* only for welded rails until 11/2004

Overview

Siemens VDO PCR 2.3 K9K

1.5l | 66 kW | 85 kW



Nissan Qashqai



Pump
A2C59511605

Injector
A2C59511606

Renault Clio



Nissan Tiida



Rail with high pressure sensor
A2C59511607

Renault Scenic



Renault Modus

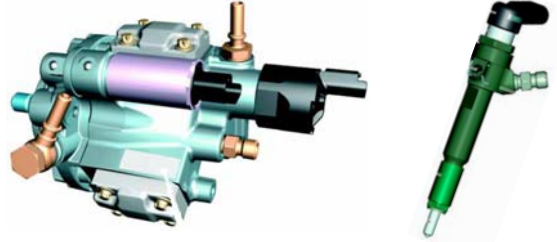


Renault Megane



Siemens VDO PCR 2.3 Lynx

1.5l | 66 kW | 85 kW



Ford S-MAX



Pump
A2C59511609

Injector
A2C59511610

Ford Mondeo



Ford Galaxy



Injector V227
A2C59511611

Ford Connect



Ford C-MAX



Application overview

- Sorted by manufacturer -

OE-manufacturer	Type	Engine	System
Citroen	Berlingo	2.0l - 64 kW - 2 Valve	PCR 2.0 DW 10 TD
Citroen	C1	1.4l - 50 kW - Euro 3/Euro 4	PCR 2.0 DV 4 TD
Citroen	C2	1.4l - 50 kW - Euro 3/Euro 4	PCR 2.0 DV 4 TD
Citroen	C3	1.4l - 50 kW - Euro 3/Euro 4	PCR 2.0 DV 4 TD
Citroen	C4	2.0l -100 kW - 4 Valve	PCR 2.0 DW 10 BTED
Citroen	C5	2.0l - 64 kW - 2 Valve	PCR 2.0 DW 10 TD
Citroen	C5	2.0l -100 kW - 4 Valve	PCR 2.0 DW 10 BTED
Citroen	C6	2.7l - 4 Valve - Euro 3/Euro 4	PCR Lion V6
Citroen	C8	2.0l -100 kW - 4 Valve	PCR 2.0 DW 10 BTED
Citroen	Picasso	2.0l -100 kW - 4 Valve	PCR 2.0 DW 10 BTED
Citroen	Xsara	2.0l - 64 kW - 2 Valve	PCR 2.0 DW 10 TD
Ford	C-Max	1.8l - 85 kW / 92 kW	PCR Lynx
Ford	C-Max	2.0l -100 kW - 4 Valve	PCR 2.0 DW 10 BTED
Ford	Connect	1.8l - 85 kW / 92 kW	PCR Lynx
Ford	Fiesta	1.4l - 50 kW - Euro 3/Euro 4	PCR 2.0 DV 4 TD
Ford	Fusion	1.4l - 50 kW - Euro 3/Euro 4	PCR 2.0 DV 4 TD
Ford	Galaxy	1.8l - 85 kW / 92 kW	PCR Lynx
Ford	Mondeo	1.8l - 85 kW / 92 kW	PCR Lynx
Ford	S-Max	1.8l - 85 kW / 92 kW	PCR Lynx
Jaguar	S-Type	2.7l - 4 Valve - Euro 3/Euro 4	PCR Lion V6
Jaguar	XJ	2.7l - 4 Valve - Euro 3/Euro 4	PCR Lion V6
Land Rover	Discovery	2.7l - 4 Valve - Euro 3/Euro 4	PCR Lion V6
Mazda	2	1.4l - 50 kW - Euro 3/Euro 4	PCR 2.0 DV 4 TD
Nissan	Qashqai	1.5l - 66 kW / 85 kW	PCR K9K
Nissan	Tiida	1.5l - 66 kW / 85 kW	PCR K9K
Peugeot	107	1.4l - 50 kW - Euro 3/Euro 4	PCR 2.0 DV 4 TD
Peugeot	307	1.4l - 50 kW - Euro 3/Euro 4	PCR 2.0 DV 4 TD
Peugeot	307	2.0l - 64 kW - 2 Valve	PCR 2.0 DW 10 TD
Peugeot	307	2.0l -100 kW - 4 Valve	PCR 2.0 DW 10 BTED
Peugeot	407	2.0l - 64 kW - 2 Valve	PCR 2.0 DW 10 TD
Peugeot	407	2.0l -100 kW - 4 Valve	PCR 2.0 DW 10 BTED
Peugeot	407	2.7l - 4 Valve - Euro 3/Euro 4	PCR Lion V6
Peugeot	607	2.0l -100 kW - 4 Valve	PCR 2.0 DW 10 BTED
Peugeot	607	2.7l - 4 Valve - Euro 3/Euro 4	PCR Lion V6
Peugeot	807	2.0l -100 kW - 4 Valve	PCR 2.0 DW 10 BTED
Peugeot	406 (Facelift)	2.0l - 64 kW - 2 Valve	PCR 2.0 DW 10 TD
Peugeot	Partner	2.0l - 64 kW - 2 Valve	PCR 2.0 DW 10 TD
Range Rover	Sport	2.7l - 4 Valve - Euro 3/Euro 4	PCR Lion V6
Renault	Clio	1.5l - 66 kW / 85 kW	PCR K9K
Renault	Megane	1.5l - 66 kW / 85 kW	PCR K9K
Renault	Modus	1.5l - 66 kW / 85 kW	PCR K9K
Renault	Scenic	1.5l - 66 kW / 85 kW	PCR K9K
Suzuki	Vitara	2.0l - 64 kW - 2 Valve	PCR 2.0 DW 10 TD
Toyota	Aygo	1.4l - 50 kW - Euro 3/Euro 4	PCR 2.0 DV 4 TD
Volvo	C30	2.0l -100 kW - 4 Valve	PCR 2.0 DW 10 BTED
Volvo	S40	2.0l -100 kW - 4 Valve	PCR 2.0 DW 10 BTED
Volvo	V50	2.0l -100 kW - 4 Valve	PCR 2.0 DW 10 BTED

Siemens VDO Common Rail Diesel

- Overview -

PCR 2.0 DW 10 TD	PCR 2.0 DV 4 TD	PCR 2.0 DW 10 BTED	PCR Lion V6	PCR K9K	PCR Lynx
Pump 5WS40018-Z	Pump 5WS40008-Z	Pump 5WS40019-Z Pump (Volvo) 5WS40163Z Pump (Volvo-NEW) A2C 59511600	Pump A2C 59511314	Pump A2C 59511605	Pump A2C 59511609
Injector 5WS40000-Z	Injector, Euro 3 5WS40148-Z Injector, Euro 4 5WS40149-Z Injector, Euro 4 (Kyocera) A2C 59511612	Injector, Class 4 5WS40156-4Z Injector, Class 5 5WS40156-Z Injector, Class 6 A2C 59511601 Injector DW10U-MFMA A2C 59511602 Injector MFMA A2C 59511603	Injector Euro 3 (only Jaguar) A2C 59511315 Injector Euro 4 (Jaguar + PSA) A2C 59511316 Injector (only Land Rover) A2C 59511364	Injector A2C 59511606	Injector A2C 59511610 Injector V227 A2C 59511611
Pipe Pump 5WS40003-Z * Pipe Cylinder 1+3 5WS40004-Z * Pipe Cylinder 2+4 5WS40005-Z *		Pipe Pump 5WS40040-Z * Pipe Cylinder 1+3 5WS40042-Z * Pipe Cylinder 2+4 5WS40043-Z *			
Leakage-Clip X11-800-001-003Z	Leakage-Clip X11-800-001-001Z	Leakage-Clip X11-800-001-003Z			
			Diverter Rail A2C 59511317 Right-hand Rail A2C 59511319 Left-hand Rail A2C 59511318	Rail with High Pressure Sensor A2C 59511607	
			Injector Clamp A2C 59511320		
Pressure Control Valve (PCV) X39-800-300-005Z	Pressure Control Valve (PCV) X39-800-300-005Z	Pressure Control Valve (PCV) X39-800-300-005Z			
Volume Control Valve (VCV) (screwed) X39-800-300-006Z	Volume Control Valve (VCV) (screwed) X39-800-300-006Z	Volume Control Valve (VCV) (flanged) X39-800-300-018Z			
Set Connectors H P P X39-800-300-002Z	Set Connectors H P P X39-800-300-015Z	Set Connectors H P P X39-800-300-016Z X39-800-300-017Z (Volvo)			
Set Safety Caps X39-800-300-003Z	Set Safety Caps X39-800-300-012Z	Set Safety Caps X39-800-300-013Z X39-800-300-014Z (Volvo)			
Copper Rings (Set of 100 pieces) X11-800-002-001Z	Copper Rings (Set of 100 pieces) X11-800-002-004Z	Copper Rings (Set of 100 pieces) X11-800-002-002Z			

* only for welded rails until 11/2004

Cross reference List

- as at October 2007-

OE-number	OE-manufacturer	SVT-ordernumber	part description	remarks	System
1231950	Ford	5WS40040-Z	Pipe Pump-Rail	only for welded rails until 11/2004	DW 10 BTED
1231951	Ford	5WS40042-Z	Pipe Cyl. 1+3	only for welded rails until 11/2004	DW 10 BTED
1334919	Ford	A2C59511314	CR-pump	5WS40157	DT17 / Lion V6
1348625	Ford	X11-800-002-001Z	Washer 2.5mm		DV 4 TD
1355051	Ford	A2C59511610	Injector	5WS40086	Lynx
1355053	Ford	A2C59511609	CR-pump	5WS40094	Lynx
1369551	Ford	A2C59511318	Rail left	5WS40129	DT17 / Lion V6
1369552	Ford	A2C59511319	Rail right	5WS40130	DT17 / Lion V6
1373546	Ford	5WS40019-Z	CR-pump		DW 10 BTED
1373549	Ford	5WS40156-4Z	Injector Class 4		DW 10 BTED
1373550	Ford	5WS40156-Z	Injector Class 5		DW 10 BTED
1376439	Ford	A2C59511600	CR-pump	5WS40380	DW 10 BTED
1387695	Ford	A2C59511317	Diverter rail	5WS40128	DT17 / Lion V6
1404786	Ford	5WS40008-Z	CR-pump		DV 4 TD
1432322	Ford	A2C59511611	Injector V227	5WS40250	Lynx
1459401	Ford	A2C59511609	CR-pump	5WS40094	Lynx
1469709	Ford	5WS40149-Z	Injector Euro4		DV 4 TD
1483820	Ford	A2C59511601	Injector Class 6	5WS40156-6	DW 10 BTED
1488987	Ford	5WS40008-Z	CR-pump		DV 4 TD
8603527	Volvo	5WS40163-Z	CR-pump		DW 10 BTED
8603564	Volvo	5WS40156-Z	Injector Class 5		DW 10 BTED
8603565	Volvo	5WS40156-4Z	Injector Class 4		DW 10 BTED
1570.A9	PSA	5WS40003-Z	Pipe Pump-Rail	only for welded rails until 11/2004	DW 10 TD
1570.C1	PSA	5WS40004-Z	Pipe Cyl. 1+3	only for welded rails until 11/2004	DW 10 TD
1570.C2	PSA	5WS40005-Z	Pipe Cyl. 2+4	only for welded rails until 11/2004	DW 10 TD
1570.F8	PSA	5WS40040-Z	Pipe Pump-Rail	only for welded rails until 11/2004	DW 10 BTED
1570.G0	PSA	5WS40042-Z	Pipe Cyl. 1+3	only for welded rails until 11/2004	DW 10 BTED
1570.G1	PSA	5WS40043-Z	Pipe Cyl. 2+4	only for welded rails until 11/2004	DW 10 BTED
1570.G8	PSA	A2C59511318	Rail left	5WS40129	DT17 / Lion V6
1570.G9	PSA	A2C59511319	Rail right	5WS40130	DT17 / Lion V6
1570.H4	PSA	A2C59511317	Diverter rail	5WS40128	DT17 / Lion V6
1579.KK	PSA	X11-800-001-002Z	Leakage-Clip		DT17 / Lion V6
1920.CG	PSA	5WS40018-Z	CR-Pump		DW 10 TD
1920.EP	PSA	5WS40008-Z	CR-pump		DV 4 TD
1920.HJ	PSA	A2C59511314	CR-pump	5WS40157	DT17 / Lion V6
1920.KV	PSA	5WS40019-Z	CR-pump		DW 10 BTED
1980.90	PSA	5WS40007	Injector	replaced by 5WS40148-Z	DV 4 TD
1980.C0	PSA	5WS40044	Injector	replaced by 5WS40156-Z	DW 10 BTED
1980.E7	PSA	5WS40148-Z	Injector Euro3		DV 4 TD
1980.E8	PSA	5WS40044	Injector	replaced by 5WS40156-4Z	DW 10 BTED
1980.F0	PSA	5WS40000-Z	Injector		DW 10 TD
1980.H1	PSA	A2C59511316	Injector Euro4	5WS40103	DT17 / Lion V6
1980.J1	PSA	5WS40149-Z	Injector Euro4		DV 4 TD
1980.J4	PSA	5WS40156-4Z	Injector Class 4		DW 10 BTED
1980.J5	PSA	5WS40156-Z	Injector Class 5		DW 10 BTED
1980.J9	PSA	not released yet for IAM	Injector Class 7	5WS40322-7	DW 10 BTED
1980.K0	PSA	not released yet for IAM	Injector Class 8	5WS40322-8	DW 10 BTED
1980.K5	PSA	A2C59511602	Injector Class M	5WS40200	DW10U
1980.K8	PSA	A2C59511603	Injector Class M	5WS40441	DW 10 BTED
1980.L0	PSA	A2C59511612	Injector (Kyocera)	5WS40516	DV 4 TD

Cross reference List

- as at October 2007-

OE-number	OE-manufacturer	SVT-ordernumber	part description	remarks	System
1981.65	PSA	X11-800-002-001Z	Washer 2.5mm		DV4TD; DW10TD
1981.67	PSA	X11-800-002-002Z	Washer		DT17 / Lion V6
1981.69	PSA	not released yet for IAM	Washer 2.9mm		DV 4 TD
1982.A2	PSA	X11-800-001-003Z	Leakage-Clip		DW 10 TD
1982.A4	PSA	X11-800-001-002Z	Leakage-Clip		DW 10 BTED
1982.C4	PSA	X11-800-001-001Z	Leakage-Clip		DV 4 TD
1982.C6	PSA	A2C59511320	Injector Clamp		DT17 / Lion V6
2S6Q 9A543 AC	Ford	5WS40008-Z	CR-pump		DV 4 TD
2S6Q 9A543 AD	Ford	5WS40008-Z	CR-pump		DV 4 TD
2S6Q 9E568 AB	Ford	X11-800-002-001Z	Washer 2.5mm		DV 4 TD
2S6Q 9F593 AB	Ford	5WS40148-Z	Injector Euro3		DV 4 TD
2S6Q 9F593 AC	Ford	5WS40148-Z	Injector Euro3		DV 4 TD
2S6Q 9F593 BC	Ford	5WS40149-Z	Injector Euro4		DV 4 TD
2S6Q 9F593 BD	Ford	5WS40149-Z	Injector Euro4		DV 4 TD
2S6Q 9G719 AA	Ford	X11-800-001-001Z	Leakage-Clip		DV 4 TD
307 251 06	Volvo	not released yet for IAM	Injector	5WS40518	DW 10 BTED
312 16 456	Volvo	A2C59511601	Injector Class 6	5WS40156-6	DW 10 BTED
3M5Q 9A543 BD	Ford	5WS40019-Z	CR-pump		DW 10 BTED
3M5Q 9A543 CB	Ford	A2C59511600	CR-pump	5WS40380	DW 10 BTED
3M5Q 9F593 DB	Ford	5WS40156-4Z	Injector Class 4		DW 10 BTED
3M5Q 9F593 EB	Ford	5WS40156-Z	Injector Class 5		DW 10 BTED
3M5Q 9F593 FB	Ford	A2C59511601	Injector Class 6	5WS40156-6	DW 10 BTED
3M5Q 9J323 BA	Ford	5WS40040-Z	Pipe Pump-Rail	only for welded rails until 11/2004	DW 10 BTED
3M5Q 9N868 CA	Ford	5WS40042-Z	Pipe Cyl. 1+3	only for welded rails until 11/2004	DW 10 BTED
3M5Q 9N868 DA	Ford	5WS40043-Z	Pipe Cyl. 2+4	only for welded rails until 11/2004	DW 10 BTED
4H2Q 9K546 AE	Ford	5WS40062	Injector	replaced by A2C59511364	DT17 / Lion V6
4H2Q 9K546 AF	Ford	A2C59511364	Injector (only Land Rover)	5WS40249	DT17 / Lion V6
4M5Q 9B395 AD	Ford	A2C59511609	CR-pump	5WS40094	Lynx
4M5Q 9B395 AE	Ford	A2C59511609	CR-pump	5WS40094	Lynx
4M5Q 9F524 AA	Ford	X11-800-001-003Z	Leakage-Clip		DW 10 TD
4M5Q 9F593 AD	Ford	A2C59511610	Injector	5WS40086	Lynx
4R8Q 9C066 AE	Ford	A2C59511317	Diverter rail	5WS40128	DT17 / Lion V6
4R8Q 9D280 AC	Ford	A2C59511318	Rail left	5WS40129	DT17 / Lion V6
4R8Q 9D280 BC	Ford	A2C59511319	Rail right	5WS40130	DT17 / Lion V6
4S7Q 9B395 AJ	Ford	A2C59511314	CR-pump	5WS40157	DT17 / Lion V6
4S7Q 9B395 AK	Ford	A2C59511314	CR-pump	5WS40157	DT17 / Lion V6
4S7Q 9F524 AB	Ford	X11-800-001-002Z	Leakage-Clip		DT17 / Lion V6
4S7Q 9K546 AF	Ford	A2C59511315	Injector Lion V6 Euro 3 (nur Jaguar)	5WS40057	Lion V6
4S7Q 9K546 AG	Ford	A2C59511315	Injector Lion V6 Euro 3 (nur Jaguar)	5WS40057	Lion V6
4S7Q 9L535 AC	Ford	A2C59511320	Injector Clamp	5WS40246	DT17 / Lion V6
4S7Q 9M577 AA	Ford	X11-800-002-002Z	Washer		DT17 / Lion V6
5U3Q 9K546 AA	Ford	A2C59511316	Injector Lion V6 Euro 4	5WS40103	DT17 / Lion V6
6H4Q 9B395 BD	Ford	not released yet for IAM	CR-pump	5WS40254	Lion V8
6H4Q 9B395 BE	Ford	not released yet for IAM	CR-pump	5WS40254	Lion V8
6H4Q 9D280 AB	Ford	not released yet for IAM	Rail left	5WS40256	Lion V8
6H4Q 9D280 BB	Ford	not released yet for IAM	Rail right with HP-sensor	5WS40255	Lion V8
6H4Q 9K546 DB	Ford	not released yet for IAM	Injector	5WS40253	Lion V8
6H4Q 9K546 EB	Ford	not released yet for IAM	Injector 174°	5WS40387	Lion V8
7701 477 442	Renault	X11-800-001-002Z	Leakage-Clip		K9K
7H2Q 9B395 CC	Ford	not released yet for IAM	CR-pump	5WS40273	Lion V6 UG

Cross reference List

- as at October 2007-

OE-number	OE-manufacturer	SVT-ordernumber	part description	remarks	System
7H2Q 9B395 CD	Ford	not released yet for IAM	CR-pump	5WS40273	Lion V6 UG
7H2Q 9B395 CE	Ford	not released yet for IAM	CR-pump	5WS40273	Lion V6 UG
7H2Q 9D280 CD	Ford	not released yet for IAM	Rail left with HP-sensor	5WS40272	Lion V6 UG
7H2Q 9D280 DD	Ford	not released yet for IAM	Rail right	5WS40271	Lion V6 UG
7H2Q 9K546 CB	Ford	not released yet for IAM	Injector	5WS40252	Lion V6 UG
7T1Q 9F593 AB	Ford	A2C59511611	Injector V227	5WS40250	Lynx
8200 380 253	Renault	A2C59511606	Injector	5WS40087	K9K
8200 397 346	Renault	A2C59511607	Rail with HP-Sensor	5WS40154	K9K
8200 430 599	Renault	A2C59511605	CR-pump	5WS40153	K9K
8200 663 258	Renault	A2C59511605	CR-pump	5WS40153	K9K
94 019 82A 43	PSA	X11-800-001-002Z	Leakage-Clip		DW 10 BTED
94 019 82C 48	PSA	X11-800-001-001Z	Leakage-Clip		DV 4 TD
94 646 446 80	PSA	X11-800-001-003Z	Leakage-Clip		DW 10 TD
96 366 738 80	PSA	5WS40018-Z	CR-Pump		DW 10 TD
96 366 757 80	PSA	5WS40005-Z	Pipe Cyl. 2+4	only for welded rails until 11/2004	DW 10 TD
96 366 802 80	PSA	5WS40000-Z			DW 10 TD
96 458 344 80	PSA	5WS40040-Z	Pipe Pump-Rail	only for welded rails until 11/2004	DW 10 BTED
96 472 472 80	PSA	5WS40044	Injector	replaced by 5WS40156-Z	DW 10 BTED
96 489 170 80	PSA	A2C59511316	Injector Euro4	5WS40103	DT17 / Lion V6
96 495 744 80	PSA	5WS40007	Injector	replaced by 5WS40148-Z	DV 4 TD
96 521 736 80	PSA	5WS40000-Z	Injector		DW 10 TD
96 521 737 80	PSA	5WS40000-Z	Injector		DW 10 TD
96 521 753 80	PSA	5WS40018-Z	CR-Pump		DW 10 TD
96 527 071 80	PSA	5WS40063	Injector	replaced by 5WS40149-Z	DV 4 TD
96 527 632 80	PSA	5WS40007	Injector	replaced by 5WS40148-Z	DV 4 TD
96 532 764 80	PSA	X11-800-002-001Z	Washer 2.5mm		DW 10 TD
96 539 696 80	PSA	A2C59511318	Rail left	5WS40129	DT17 / Lion V6
96 539 697 80	PSA	A2C59511319	Rail right	5WS40130	DT17 / Lion V6
96 540 918 80	PSA	5WS40019-Z	CR-pump		DW 10 BTED
96 545 509 80	PSA	5WS40149-Z	Injector Euro4		DV 4 TD
96 545 510 80	PSA	5WS40149-Z	Injector Euro4		DV 4 TD
96 546 155 80	PSA	5WS40163-Z			DT17 / Lion V6
96 548 627 80	PSA	not released yet for IAM	Washer 2.9mm		DV 4 TD
96 550 298 80	PSA	A2C59511314	CR-pump	5WS40157	DT17 / Lion V6
96 553 047 80	PSA	5WS40148-Z	Injector Euro3		DV 4 TD
96 553 048 80	PSA	5WS40148-Z	Injector Euro3		DV 4 TD
96 557 147 80	PSA	A2C59511317	Diverter rail	5WS40128	DT17 / Lion V6
96 563 229 80	PSA	X11-800-002-002Z	Washer		DT17 / Lion V6
96 571 445 80	PSA	5WS40156-4Z	Injector Class 4		DW 10 BTED
96 571 446 80	PSA	5WS40156-Z	Injector Class 5		DW 10 BTED
96 571 447 80	PSA	5WS40156-Z	Injector Class 5		DW 10 BTED
96 581 760 80	PSA	5WS40008-Z	CR-pump		DV 4 TD
96 581 937 80	PSA	5WS40163-Z			DT17 / Lion V6
96 581 939 80	PSA	5WS40019-Z	CR-pump		DW 10 BTED
96 581 941 80	PSA	not released yet for IAM	Injector	5WS40322 - 8	DW 10 BTED
96 581 950 80	PSA	5WS40018-Z	CR-Pump		DW 10 TD
96 586 760 80	PSA	A2C59511320	Injector Clamp	5WS40246	DT17 / Lion V6
96 592 442 80	PSA	5WS40156-Z			DW 10 BTED
96 593 379 80	PSA	5WS40019-Z	CR-pump		DW 10 BTED
96 603 348 80	PSA	A2C59511603	Injector	5WS40441	DW 10 BTED

Cross reference List

- as at October 2007-

OE-number	OE-manufacturer	SVT-ordernumber	part description	remarks	System
96 616 839 80	PSA	not released yet for IAM	Injector Class 9	5WS40420	DW 10 BTED
96 620 215 80	PSA	A2C59511600	CR-pump (Volvo new)	5WS40380	DW 10 BTED
96 634 292 80	PSA	A2C59511612	Injector (Kyocera)	5WS40516	DV 4 TD
96 819 009 80	PSA	5WS40019-Z	CR-pump		DW 10 BTED
96 835 287 80	PSA	5WS40008-Z	CR-pump		DV 4 TD
96 836 237 80	PSA	5WS40019-Z	CR-pump		DW 10 BTED
96 836 240 80	PSA	A2C59511600	CR-pump (Volvo new)	5WS40380	DW 10 BTED
96 836 277 80	PSA	5WS40019-Z	CR-pump		DW 10 BTED
96 854 408 80	PSA	5WS40008-Z	CR-pump		DV 4 TD
96 857 048 80	PSA	5WS40019-Z	CR-pump		DW 10 BTED
96 857 050 80	PSA	A2C59511600	CR-pump (Volvo new)	5WS40380	DW 10 BTED
97 151 354 80	PSA	5WS40063	Injector	replaced by 5WS40149-Z	DV 4 TD
C2S 21181	Jaguar	X11-800-002-002Z	Washer		DT17 / Lion V6
C2S 24003	Jaguar	A2C59511320	Injector Clamp	5WS40246	DT17 / Lion V6
C2S 29876	Jaguar	A2C59511317	Diverter rail	5WS40128	DT17 / Lion V6
C2S 32276	Jaguar	X11-800-001-002Z	Leakage-Clip		DT17 / Lion V6
C2S 40004	Jaguar	A2C59511316	Injector Euro4	5WS40103	DT17 / Lion V6
C2S 43326	Jaguar	A2C59511317	Diverter rail	5WS40128	DT17 / Lion V6
JDE 2458	Jaguar	A2C59511318	Rail left	5WS40129	DT17 / Lion V6
JDE 2459	Jaguar	A2C59511319	Rail right	5WS40130	DT17 / Lion V6
JDE 3099	Jaguar	A2C59511314	CR-pump	5WS40157	DT17 / Lion V6
JDE 4062	Jaguar	A2C59511318	Rail left	5WS40129	DT17 / Lion V6
JDE 4063	Jaguar	A2C59511319	Rail right	5WS40130	DT17 / Lion V6
LR004295	Land Rover	A2C59511314	CR-pump	5WS40157	DT17 / Lion V6
LR005055	Land Rover	not released yet for IAM	Rail left	5WS40256	Lion V8
LR005056	Land Rover	not released yet for IAM	Rail right with HP-sensor	5WS40255	Lion V8
LR005057	Land Rover	not released yet for IAM	CR-pump	5WS40254	Lion V8
LR005549	Land Rover	not released yet for IAM	CR-pump	5WS40273	Lion V6 UG
LR005551	Land Rover	not released yet for IAM	Rail right	5WS40271	Lion V6 UG
LR005553	Land Rover	not released yet for IAM	Rail left with HP-sensor	5WS40272	Lion V6 UG
LR006495	Land Rover	A2C59511364	Injector (only Land Rover)	5WS40249	DT17 / Lion V6
LR006496	Land Rover	not released yet for IAM	Injector	5WS40252	Lion V6 UG
XR8 45127	Jaguar	A2C59511315	Injector Euro 3 (only Jaguar)	5WS40057	DT17 / Lion V6
XR8 56939	Jaguar	A2C59511315	Injector Euro 3 (only Jaguar)	5WS40057	DT17 / Lion V6

Notes

Notes

Notes

Siemens VDO Trading GmbH

Independent Aftermarket

Kruppstraße 105

60388 Frankfurt am Main

Germany

Telefon: +49 69 40805-0

Fax: +49 69 40805-116

E-Mail: replacementparts@siemensvdo.com

www.siemensvdo.de